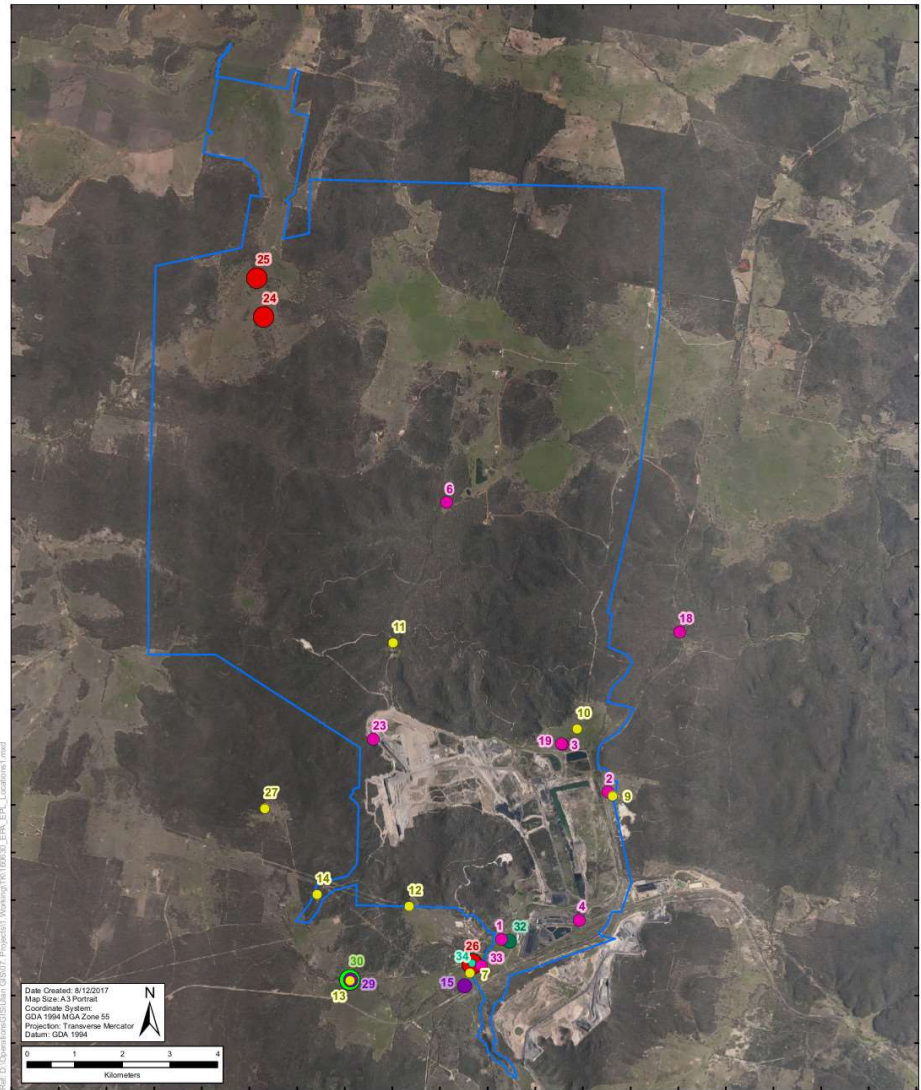


**Ulan Coal Mines Limited**  
EPL Monitoring Locations

**GLENCORE**  
Coal Assets Australia  
www.glencore.com



748678 749678 750678 751678 752678 753678 754678 755678 756678 757678 758678 759678 760678 761678 762678 763678 764678 765678 766678 767678

6422512 6423512 6424512 6425512 6426512 6427512 6428512 6429512 6430512 6431512 6432512 6433512 6434512 6435512 6436512 6437512 6438512 6439512 6440512 6441512 6442512 6443512 6444512

- Legend**
- Water Discharge & Monitoring Point
  - Dust Depositional Monitoring Point
  - HVAS Monitoring Point
  - PM10 TEOM Monitoring Point
  - Noise Monitoring Point
  - Blast Monitoring Point
  - Meteorological Monitoring
  - Project Approval Boundary
  - Approved Mining Operations

**DISCLAIMER**  
Subject To Survey.  
Glencore makes every effort to ensure the quality of the information available on this map. Before relying on the information on this map, users should carefully evaluate its accuracy, currency, completeness and relevance for their purposes, and should obtain any appropriate professional advice relevant to their particular circumstances. Glencore cannot guarantee and assumes no responsibility for the accuracy, currency or completeness of the information and by using this map you accept that Glencore has no liability for any loss or damage in any form whatsoever caused directly or indirectly from the use of this map.

**DATA SOURCE**  
© NSW Department of Finance & Services (LPI) 2016  
© NSW DTIRS (Minerals & Petroleum) 2016  
© Glencore 2016 © ESRU 2016

Map © Commonwealth of Australia (ESRI) RemoteSat Imagery © ESRI, Inc. Locations © ESRI