

Aurukun Bauxite Project

1 PROPOSED MINING LEASE

A mining lease (ML) will be required before the project can commence. The project includes infrastructure proposed to be located on the Amrun ML (ML 7024). Queensland legislation relating to the project includes provisions facilitating access to ML 7024.

2 MINE ACCESS ROAD

The mine will be accessed from Aurukun Road with a new intersection to be located approximately 45 km from Aurukun. A new sealed road, generally following the alignment of the existing Amban Road, will provide access to the Mine Infrastructure Area. This road will also provide the community with continued access to the coast (subject to future Rio Tinto activities).

3 MINE ADMINISTRATION AREA AND ACCOMMODATION VILLAGE

The Mine Administration Area and a workforce Accommodation Village with up to 280 beds, will be located adjacent to Amban Road, near the Aurukun Road intersection.



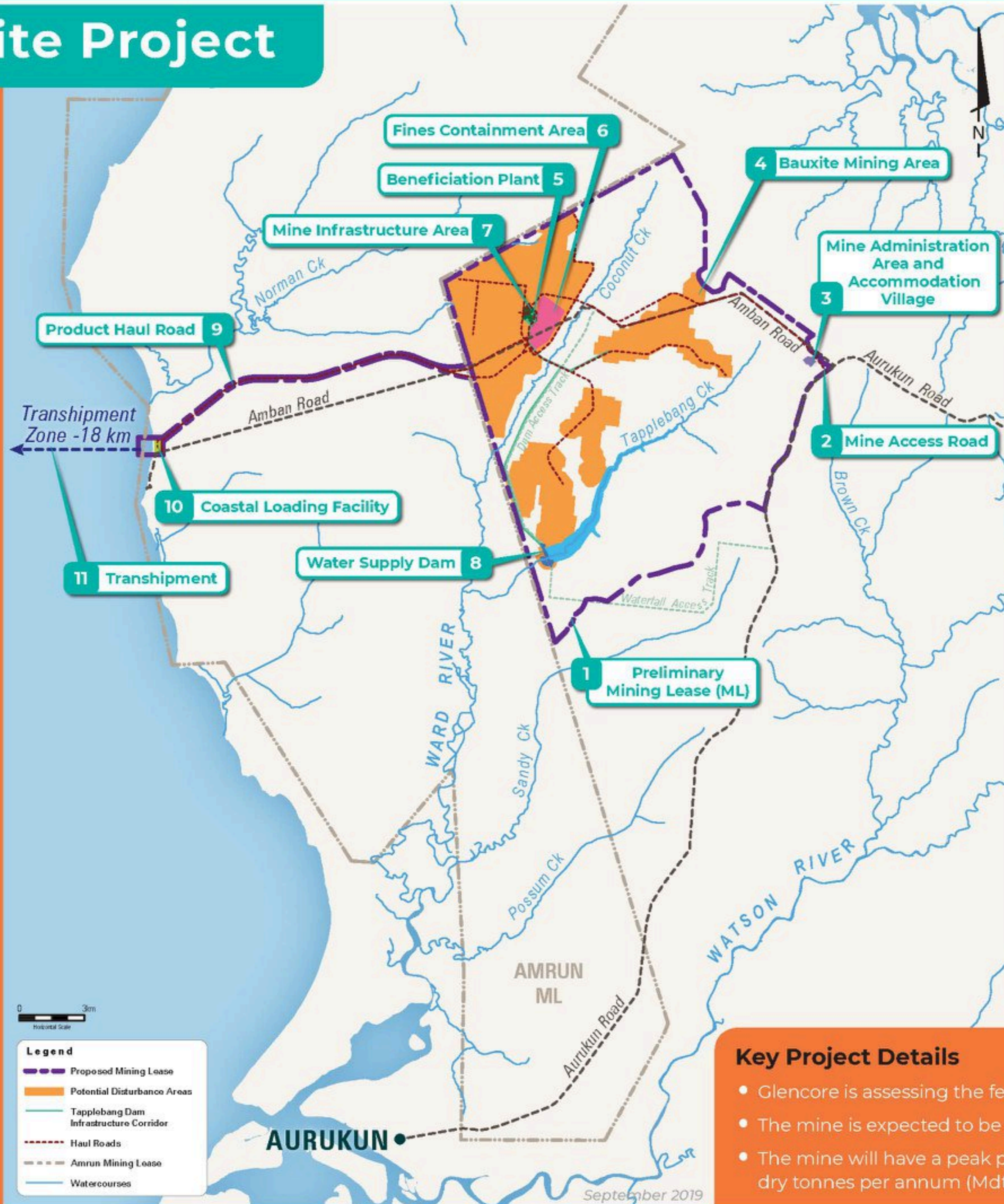
4 BAUXITE MINING AREA

Bauxite ore will be mined using front end loaders and dozers. Bauxite ore will be loaded onto haul trucks that will transport the ore to the Beneficiation Plant.



5 BENEFICIATION PLANT

The ore will be screened and washed to separate the product bauxite from the waste materials (fines).



6 FINES CONTAINMENT AREA

In the first few years of mining, fines from the beneficiation process will be pumped from the Beneficiation Plant to a Fines Containment Area. As mining progresses, fines will also be stored within the mining pits. Once filled with fines, these mining pits will be rehabilitated.

7 MINE INFRASTRUCTURE AREA

This area will contain workshops, warehouses, vehicle wash down, power generation and refuelling facilities.

8 WATER SUPPLY DAM

The Beneficiation Plant will require water which is proposed to be supplied from a new dam on Tapplebang Creek. Water will be pumped from the dam to the Mine Infrastructure Area and Beneficiation Plant.

9 PRODUCT HAUL ROAD

Road trains will transport the product bauxite from the Beneficiation Plant to the Coastal Loading Facility via a new 20 km Product Haul Road. The new Product Haul Road will need to cross the Amrun ML.

10 COASTAL LOADING FACILITY

Product bauxite will be loaded onto a Transshipment Vessel via conveyor at the Coastal Loading Facility.

11 TRANSHIPMENT

The Transshipment Vessel will transfer product bauxite to Ocean Going Vessels, which will anchor at a point approximately 18 km offshore. The Ocean Going Vessels will transport the product bauxite to overseas markets.



Key Project Details

- Glencore is assessing the feasibility of developing a new bauxite mine.
- The mine is expected to be in operation for approximately 23 years.
- The mine will have a peak production rate of approximately 8 million dry tonnes per annum (Mdtpa) of product bauxite for the export market.