



MT OWEN
OPEN CUT GLENDELL
OPEN CUT



RAVENSWORTH
OPEN CUT



LIDDELL
OPEN CUT

GLENCORE

Greater Ravensworth Community Newsletter
Summer 2017

4

Welcome from Steve Hubert, General Manager Operations, Coal Assets Australia

“Welcome to what is now the fourth edition of the Greater Ravensworth Community Newsletter. It has again, been a busy 6 months across our operations in the Greater Ravensworth area and we all look forward to the year ahead. My Operations Managers and I wish you and your families a successful and safe year.

It is extremely pleasing to be involved with teams that are focussed on working with our communities and providing support to projects that ultimately benefit all of us in the community some of which are mentioned in this newsletter. Our operations were successful in meeting their key annual operating and land rehabilitation targets, while maintaining vigilance and focus on keeping our people safe. We will continue to proactively consult and support our local communities as this is a key aspect of our business. This combined effort with local communities and landholders continues to produce real progress in areas such as land management, community development and support.”



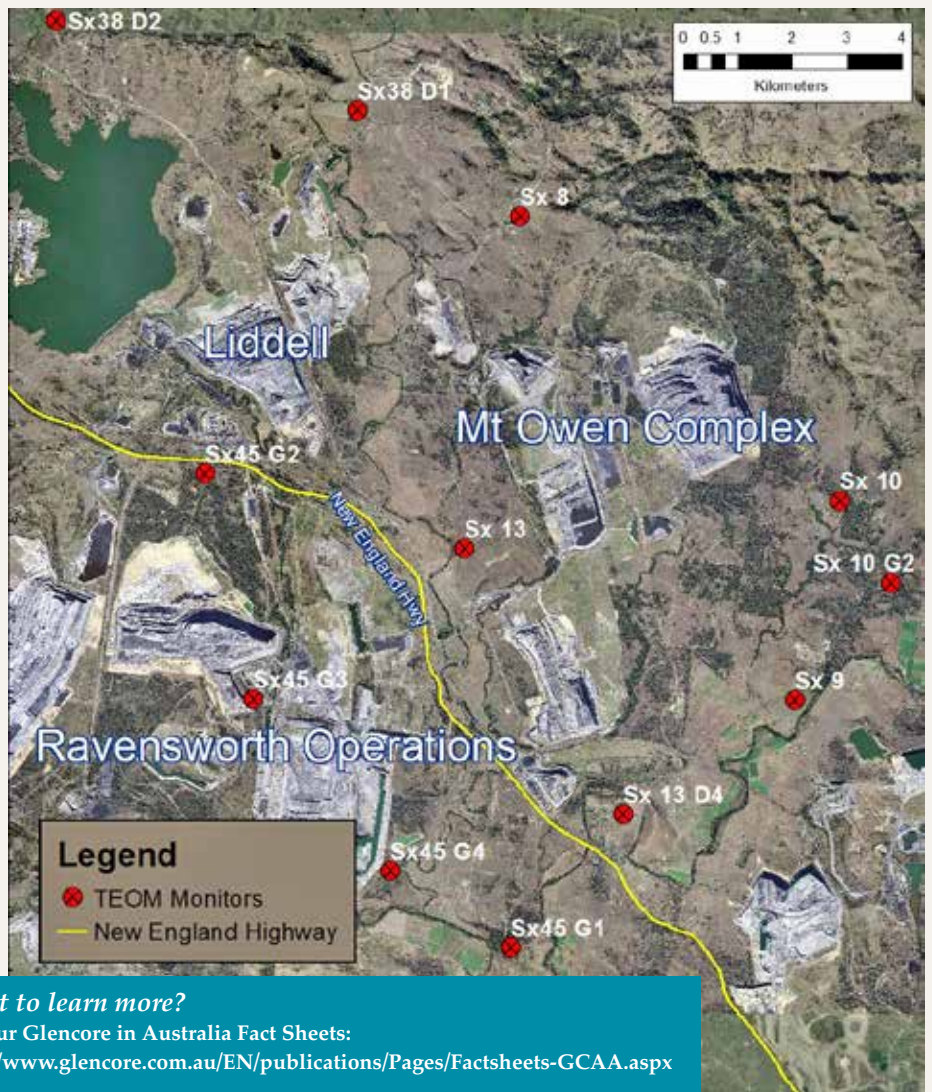
Steve Hubert - GM
Coal Assets Australia

Air Quality Monitoring in the Greater Ravensworth Area

Air quality is typically quantified by the concentrations of air pollutants in the ambient air, where an air pollutant is a substance that is known to cause health, nuisance or environmental effects. With regards to human health effects, the air pollutant most relevant to open-cut mining is airborne particulate matter. Particulate matter with equivalent aerodynamic diameter less than or equal to 10 microns is referred to as PM10, which the NSW Environment Protection Authority has set air quality criteria for.

To measure compliance with the PM10 air quality criteria, Glencore sites within the Greater Ravensworth area operate a continuous dust monitoring network consisting of 12 Tapered Element Oscillating Microbalance (TEOM) monitors. Data from these monitors is downloaded and reviewed on a daily basis, or in response to alarms, which notify site personnel of potential exceedances of the 24-hour average PM10 criteria. These alarms then allow personnel to make modifications to mining operations in order to prevent air quality exceedances from occurring.

In addition to the continuous dust monitoring network, Glencore’s Air Quality Control System (AQCS) comprises meteorological forecasting and dust dispersion modelling for the Greater Ravensworth area. This system provides early warning of adverse meteorological conditions and potential dust risks, thus facilitating proactive management of mining activities to reduce dust generation potentials.



Want to learn more?
See our Glencore in Australia Fact Sheets:
<http://www.glencore.com.au/EN/publications/Pages/Factsheets-GCAA.aspx>

Community Update

Liddell, Ravensworth and Mt Owen Complex / Integra hold separate Community Consultative Committee meetings which provide a forum for local community, local government and mine management to discuss key issues. Upcoming meetings will be held on:

- **Liddell Coal Operations**
19 May 2017
- **Ravensworth Complex**
15 March 2017
- **Mt Owen Complex / Integra Underground**
17 March 2017

Items discussed include an update on mine operations, environmental performance and community involvement, as well as providing an update on any new projects. Please refer to site specific public websites to obtain previous meeting minutes (web addresses can be found at the end of this newsletter).

Liddell Coal Operations (LCO) are currently in the process of gauging interest from community members for face to face meetings with LCO personnel to discuss any queries about Liddell which you might have or just for a general chat. Should you be interested in having a face to face meeting with LCO personnel, please contact Mikayla Henderson on 6570 9923.

Donations and Sponsorship in 2016

Liddell, Ravensworth and Mt Owen Complex are proud to be able to support a range of local charities and organisations from across the Hunter. From September 2016 the following donations have been made:

- Singleton Toy Library (\$1600)
- Lake Liddell Camp Area (\$1650)
- King St Public School (\$4000)
- Multiple Sclerosis Charity Night (\$1229)
- Hunter Prostate Alliance (\$500)
- Mater Hospital (\$1600)
- Hebden Wild Dog Association (\$2500)
- Variety Special Children's Christmas Party (\$1100)
- Muswellbrook High School Annual Presentation Evening (\$500)
- Singleton Fly Fishing Association (\$3600)
- Singleton Public School Annual Presentation Assembly (\$200)
- Singleton Fire Brigade Santa Lolly Run (\$2000)
- Samaritan's Foundation Singleton Christmas Lunch (\$2,000)
- Ravensworth Xmas Bush toy Run (\$6,821)
- St Catherine's Working Bee (\$22,239)
- Singleton Neighbourhood Centre (\$2,487)
- Singleton Heights Pre-school (\$202)



Ravensworth Staff conducting a working bee at St Catherine's College



Ravensworth Staff at the Bourke and Districts Childcare Service as part of the Ravensworth Mine Christmas Bush Toy Run

In addition to the Greater Ravensworth area site VPA contributions of \$0.5 million, a further \$54,228 was invested in the community in the form of donations and sponsorships since September 2016

Liddell Coal Operations Offsets

Liddell Coal Operations (LCO) three biodiversity offset areas Bowmans Creek Riparian Corridor, Mountain Block and Mitchell Hills South, enable the mitigation of impacts associated mining on the local environment. Within these areas LCO will be completing the following passive and assisted works to increase the biodiversity values of the area in alignment with our Biodiversity Offset Management Plan:

- Removal and replacement of redundant fencing
- Exclusion of cattle
- Weed and pest management
- Installation of nest boxes
- Erosion and sediment control works
- Seeding
- Planting of tube stock

LCO aims to use local suppliers to complete our offset regeneration works. To provide habitat in areas where mature trees are not available to support various species, LCO enlist the help of Denman & District Men's Shed to make a wide variety of nest boxes to encourage a broader range of species but also threatened species to colonise in the LCO offsets.



Nest boxes made by Denman & District Men's Shed for installation at LCO

Rehabilitation Update

It has been another successful year for land rehabilitation with Liddell, Mt Owen, Glendell and Ravensworth all meeting rehabilitation targets. The results are summarised below:

Location	Rehabilitation Completed in 2016 (ha)
Liddell	42
Mt Owen	45
Glendell	51
Ravensworth	64



Early Stage Rehabilitation at Ravensworth Mine

Integra Underground

Integra underground restart taking shape, long term options being assessed. Glencore is on schedule to resume operations at the Integra underground mine in the first quarter of the year. Since announcing in November 2016 that it was seeking to resume mining at Integra, a new management team has been preparing for the restart that involves mining one longwall block already formed and completing a second longwall block that had been partially developed by former owners Vale. Recruitment of up to 275 people is underway with Delta SBD having received more than 300 applications in just three weeks for 122 operator and trades positions, the vast majority experienced black coal operators from local areas. An engineering review and overhaul of the mine’s diesel fleet, continuous miners, conveyors and longwall is in progress, as is design and planning for development work, longwall mining and gas drainage.

“We hope to receive approvals that will enable development work to start in the first quarter of the year with first coal from the longwall expected by mid-year,” Operations Manager Peter Ostermann said.

Integra is expected to produce 1.3million tonnes of high fluidity saleable coking coal for 2017. Mr Ostermann said a drilling program across the mine lease would also be initiated next month as part of a planning exercise that is looking at longer term options for Integra.

“Glencore have agreed to support our capital request for up to \$5million to learn more about the resource that’s available on the combined lease footprint between the Integra, Glendell and Mt Owen operations,” he said. “At the moment, we don’t have sufficient data to make informed decisions on the mine’s future beyond two longwalls and the exploration program will give us the information to make those decisions should the market for coal remain positive.

“While market conditions will be a key

factor in any decisions relating to Integra, we’ve made a decision to spend the dollars required to investigate all options. “We are also applying to modify the mine plan to provide optionality should the drilling program deliver positive results.”

For further information please contact: Francis De Rosa on 0417 074 751 francis.de.rosa@glencore.com Allyn Hamonet on 0478 304 345 allyn.hamonet@glencore.com.au



First coal produced by development crews at Integra Underground Operation on Thursday 23 February (David Young – Engineering Manager (left) and Peter Ostermann – Operations Manager (right))

Hebden Road Upgrade Works Underway

Preparation for the Hebden Road upgrade works commenced in February with implementation of Aboriginal archaeological salvage in the proposed disturbance area and historic heritage archival recording in the area of the former Ravensworth Village located on the corner of the New England Highway and Hebden Road. 60 registered Aboriginal parties, Knowledge Holders and the Local Land Council, were consulted for their knowledge and advice regarding the social, historic, aesthetic and scientific values that exist within the area with three Knowledge Holder group also providing their own cultural heritage assessment reports.

This work followed on in March with commencement of relocation of telecommunication and electricity services.

The upgrade works include the construction of a rail overpass adjacent to the existing level crossing where Hebden Road crosses the Main Northern Rail Line and a new dual lane bridge over Bowmans Creek adjacent to the existing one lane crossing. The purpose of the upgrade works is to improve traffic flow, thereby providing improvement in traffic safety.

Construction works are anticipated to commence in May 2017 and are estimated to take between 9 and 12 months to complete. During this time, there will be periods of minor traffic disruption to Hebden Road users. We will be in contact with the Hebden Road community over the coming months with more details of the proposed construction schedule and the traffic management measures that will be in place over that time.



Proposed Hebden Road Upgrades

Mount Owen Continued Operations

In November 2016, the NSW Planning Assessment Commission (PAC) approved the development application for the Mount Owen Continued Operations Project subject to conditions. The conditions set standards and performance measures for acceptable environmental performance of our operations and provide for the ongoing environmental management, monitoring and reporting of the development.

In January 2017, following the NSW PAC approval, the Commonwealth Department of the Environment and Energy approved the Project subject to conditions relating to the management of biodiversity and water. The new approval will enable Mount Owen to continue operating through to

2031 by accessing coal reserves located within land owned by the mine to the south of the current North Pit. There will be no increase in annual production volumes.

The Project will maintain employment for the Mount Owen current workforce, create further construction jobs, improve local community infrastructure through the proposed Hebden Road upgrade works and continue to support local businesses supplying the mine.

Following receipt of these approvals, we have been working to revise the Mount Owen Complex Environmental Management System (EMS). We have identified and documented operational practices which will ensure that we comply with the new conditions. Some of the changes to practices include measures to manage our social impacts, such as air quality and noise management measures, additional areas managed for biodiversity enhancement and conservation, targeted completion criteria for mine rehabilitation and additional water management structures.

Throughout February 2017, we implemented the Aboriginal and Historic Heritage salvage and management programs which formally commenced the new development.



Continuation of the North Pit at Mount Owen Mine

The Division of Resources and Energy (DRE) is currently reviewing our revised Mining Operations and Rehabilitation Management Plan and we are hopeful of receiving approval of the document shortly. Following approval of the revised Management Plan, we will shortly thereafter commence operations associated with continuation of the North Pit.

A copy of the development consent conditions and the EMS documentation are available to view and download on the Mount Owen Complex website. Alternatively, please contact the Mount Owen Environment and Community team if you want to discuss any of the details of the new consent.



Commencement of the Aboriginal and Historic Heritage salvage and management programs at Mount Owen Mine

Mount Owen Voluntary Planning Agreement

Mount Owen and Singleton Council have reached agreement on a Voluntary Planning Agreement (VPA). The VPA is a condition of consent for Mount Owen Continued Operations and is intended to offset any potential local infrastructure impacts associated with the Project.

The VPA includes a total funding contribution by Mount Owen to Singleton Council community programs of \$1,024,000 and includes a number of items ranging from economic development initiatives, completion of playground equipment, community sponsorships and support for Aboriginal Cultural events. The details of the contributions are shown in the table.

Implementation of the VPA commenced in 2016 with sponsorship of the Lake St Clair Charity Bike Ride through the Rotary Club of Singleton.

Mount Owen Contribution	Intended Use	Payment Details
\$400,000	Economic Development Initiatives - Riverfront Beautification	Ten year term comprising payments of \$50,000 per annum for the first five years and \$30,000 per annum for the remaining five years.
\$500,000	Completion of the All Abilities Playground at Rose Point Park	Four payments totalling \$500,000 to be paid at identified stage of the Project.
\$100,000	Sponsorship of Community Groups	Five year term comprising payments of \$20,000 per annum.
\$ 24,000	Support for Aboriginal Cultural Events	Three year term comprising payments of \$8,000 per annum.

For further information on any of these sites, please visit our websites or use the contact details below:

Ben de Somer
Liddell Coal Operations Environment and Community Manager
T (02) 6570 9947
E Ben.Desomer@glencore.com.au
Community Complaints & Blasting Information Hotline 1800 037 317
www.liddellcoal.com.au

Luke Bowden
Ravensthorpe Complex Environment and Community Manager
T (02) 6570 0700
E Luke.Bowden@glencore.com.au
Environment/Community Enquiries Hotline 1800 620 553
www.ravensthorpeoperations.com.au

David Currey
Glendell Environment and Community Coordinator
T (02) 6520 2633
E David.Currey@glencore.com.au
Community Complaints and Enquiries Hotline 1800 248 745
www.mtowntencomplex.com.au