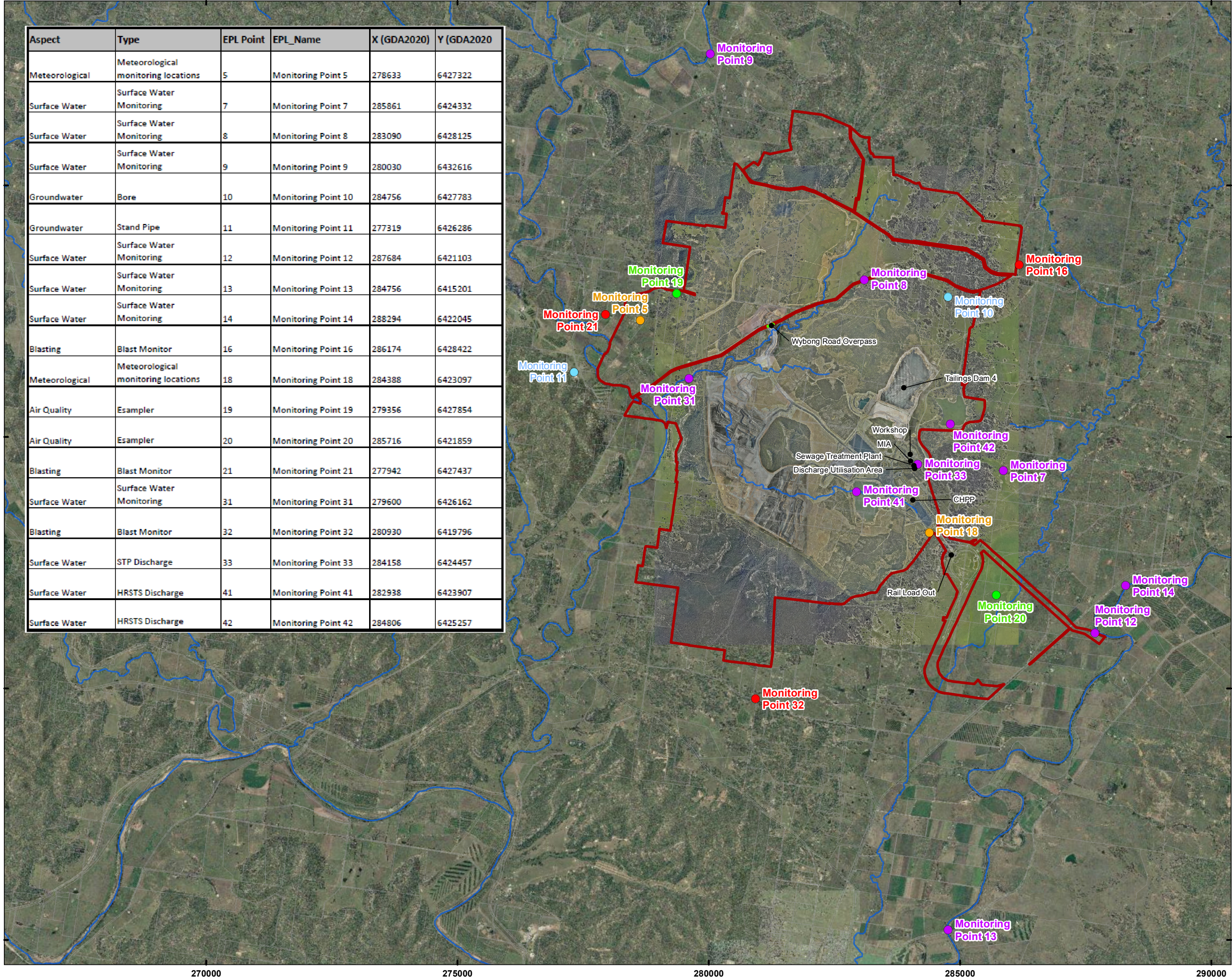


Mangoola Coal

EPL 12894 - Premises Plan and Environmental Monitoring Locations (excluding noise)



Aspect	Type	EPL Point	EPL_Name	X (GDA2020)	Y (GDA2020)
Meteorological	Meteorological monitoring locations	5	Monitoring Point 5	278633	6427322
Surface Water	Surface Water Monitoring	7	Monitoring Point 7	285861	6424332
Surface Water	Surface Water Monitoring	8	Monitoring Point 8	283090	6428125
Surface Water	Surface Water Monitoring	9	Monitoring Point 9	280030	6432616
Groundwater	Bore	10	Monitoring Point 10	284756	6427783
Groundwater	Stand Pipe	11	Monitoring Point 11	277319	6426286
Surface Water	Surface Water Monitoring	12	Monitoring Point 12	287684	6421103
Surface Water	Surface Water Monitoring	13	Monitoring Point 13	284756	6415201
Surface Water	Surface Water Monitoring	14	Monitoring Point 14	288294	6422045
Blasting	Blast Monitor	16	Monitoring Point 16	286174	6428422
Meteorological	Meteorological monitoring locations	18	Monitoring Point 18	284388	6423097
Air Quality	Esampler	19	Monitoring Point 19	279356	6427854
Air Quality	Esampler	20	Monitoring Point 20	285716	6421859
Blasting	Blast Monitor	21	Monitoring Point 21	277942	6427437
Surface Water	Surface Water Monitoring	31	Monitoring Point 31	279600	6426162
Blasting	Blast Monitor	32	Monitoring Point 32	280930	6419796
Surface Water	STP Discharge	33	Monitoring Point 33	284158	6424457
Surface Water	HRSTS Discharge	41	Monitoring Point 41	282938	6423907
Surface Water	HRSTS Discharge	42	Monitoring Point 42	284806	6425257

Legend

Proposed EPL Boundary

Wybong Road Overpass

Air Quality Monitoring Point

Blast Monitoring Point

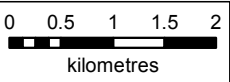
Groundwater Monitoring Point

Surface Water Monitoring Point

Meteorological Monitoring Point

Watercourse

Note: Public roads are not part of the premises unless closed temporarily or permanently in accordance with the Roads Act 1993 or an agreement is in place with the relevant road authority.



Date Created: 21/03/2023
Map Size: A3 Landscape
Coordinate System: GDA2020 MGA Zone 56
Projection: Transverse Mercator
Datum: GDA2020

N

CERTIFICATION
I, Simon Jay, Registered Mining Surveyor (BOSSI ID No. 8380) certify that to the best of my knowledge, the information shown on this plan is spatially correct.

ENDORSEMENT
Information shown on this plan has been supplied by Mangoola Coal Environment and Community Department, and has not been surveyed by me.

Simon Jay

Simon Jay

21/03/2023

Date