

# Aurukun Bauxite Project

## EIS Information Sheet

This EIS Information Sheet provides an update on the current status of the Aurukun Bauxite Project (the project) and describes the environmental impact assessment process being undertaken for the project.

Glencore Bauxite Resources Pty Ltd (Glencore) is the proponent for the project and is a wholly owned subsidiary of Glencore plc. Glencore plc is one of the world's largest globally diversified natural resource companies and has been operating in Australia for nearly 20 years.



**Figure 1** Project Location

## Introduction

Glencore has held a Mineral Development Licence (MDL) over the Aurukun Bauxite Resource in western Cape York since January 2018 (MDL 2001). The Aurukun Bauxite Project (the project) involves the construction and operation of an open cut bauxite mine on a greenfield site at the northern end of MDL 2001. The proposed mine is anticipated to have a peak production rate of up to eight (8) Million dry tonnes per annum (Mdtpa) of product bauxite. The project life is expected to be 25 years, including approximately two years of construction. At the peak of construction, up to 300 workers may be needed. The annual average operational workforce will be approximately 420 people based on current project planning.

The project is located approximately 23 km to the north-east of Aurukun and 35 km south of Weipa on the traditional lands of the Wik Waya people (Figure 1). Ngan Aak-Kunch (NAK), on behalf of the Wak Waya people, hold the Native Title rights and Aboriginal freehold rights over the project area.

The project requires environmental approval from the Queensland and Federal governments and an Environmental Impact Statement (EIS) will be prepared as part of the environmental approval process. Glencore has engaged environmental consultants, Hansen Bailey, to prepare the EIS for the project. The purpose of this EIS Information Sheet is to provide an introduction to the project and a description of the environmental approval and stakeholder engagement processes for the project.

Figure 2 shows an indicative project layout.



## 1 PROPOSED MINING LEASE

A mining lease (ML) will be required before the project can commence. The proposed ML boundary is shown on Figure 2. The project includes infrastructure proposed to be located on the Amrun ML (ML 7024). Queensland legislation relating to the project includes provisions facilitating access to ML 7024.

## 2 MINE ACCESS ROAD

The mine will be accessed from Aurukun Road with a new intersection to be located approximately 45 km from Aurukun. A new sealed road, generally following the alignment of the existing Amban Road, will provide access to the Mine Infrastructure Area. This road will also provide the community with continued access to the coast (subject to future Rio Tinto activities).

## 3 MINE ADMINISTRATION AREA AND ACCOMMODATION VILLAGE

The Mine Administration Area and a workforce Accommodation Village with up to 280 beds, will be located adjacent to Amban Road, near the Aurukun Road intersection.



## 4 BAUXITE MINING AREA

Bauxite ore will be mined using front end loaders and dozers. Bauxite ore will be loaded onto haul trucks that will transport the ore to the Beneficiation Plant.



## 5 BENEFICIATION PLANT

The ore will be screened and washed to separate the product bauxite from the waste materials (fines).

## 6 FINES CONTAINMENT AREA

In the first few years of mining, fines from the beneficiation process will be pumped from the Beneficiation Plant to a Fines Containment Area. As mining progresses, fines will also be stored within the mining pits. Once filled with fines, these mining pits will be rehabilitated.

## 7 MINE INFRASTRUCTURE AREA

This area will contain workshops, warehouses, vehicle wash down, power generation and refuelling facilities.

## 8 WATER SUPPLY DAM

The Beneficiation Plant will require water which is proposed to be supplied from a new dam on Tapplebang Creek. Water will be pumped from the dam to the Mine Infrastructure Area and Beneficiation Plant.

## 9 PRODUCT HAUL ROAD

Road trains will transport the product bauxite from the Beneficiation Plant to the Coastal Loading Facility via a new 20 km Product Haul Road. The new Product Haul Road will need to cross the Amrun ML.

## 10 COASTAL LOADING FACILITY

Product bauxite will be loaded onto a Transhipment Vessel via conveyor at the Coastal Loading Facility.

## 11 TRANSHIPMENT

The Transhipment Vessel will transfer product bauxite to Ocean Going Vessels, which will anchor at a point approximately 18 km offshore. The Ocean Going Vessels will transport the product bauxite to overseas markets.

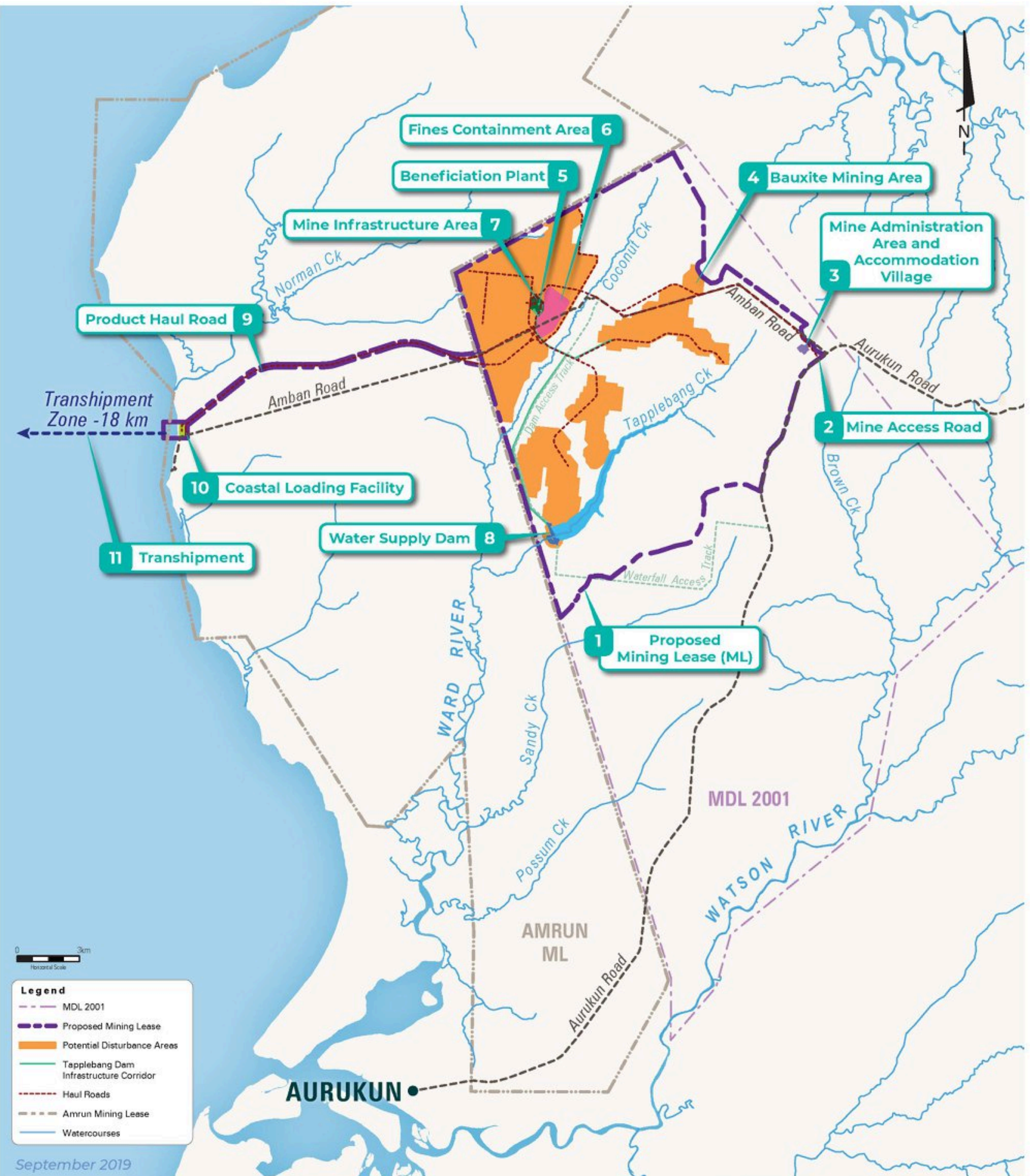
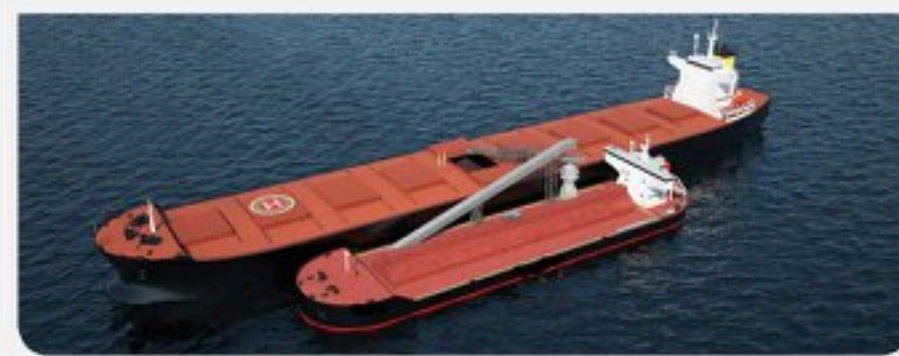


Figure 2 Indicative Project Layout



# Environmental Approval Process

The project requires the following two primary environmental approvals before the mine can be developed:

- An Environmental Authority (EA) from the Queensland Department of Environment and Science (DES) under the *Environmental Protection Act 1994*; and
- Approval from the Federal Department of Environment and Energy (DoEE) under the *Environment Protection and Biodiversity Conservation Act 1999* (EPBC Act).

The EIS will support applications for an EA and EPBC Act Approval.

Terms of Reference (ToR) for the EIS will be prepared and will outline the scope for the EIS studies required by DES and DoEE.

Once complete, the EIS will be submitted to the DES (anticipated in 2020). The DES will then place the EIS on public exhibition. During EIS public exhibition, stakeholders will be invited to make submissions to the DES on the EIS. The DES will consider any submissions as part of its assessment of the EIS.

Before mining can commence, the project will also require a range of approvals from landowners. These approvals include an Indigenous Land Use Agreement (ILUA) and a landowner compensation agreement.



## EIS Studies

Specialist studies will be undertaken as part of the EIS to assess the following issues:

- Ecology - aquatic, marine and terrestrial
- Surface water
- Groundwater
- Soils
- Rehabilitation and closure
- Noise and vibration
- Air quality
- Traffic
- Waste management
- Cultural heritage
- Social and economic impacts



## Stakeholder Engagement

Glencore has been engaging with the Aurukun community about the project since 2016. Stakeholder consultation will continue with the community and Traditional Owners throughout the EIS process.

During September, October and November 2019 meetings will be held with stakeholders within and outside Aurukun to provide information about the project and the EIS process, and to identify issues related to the project.

## Further Information

If you require any further information about the project, please contact the project team:

✉ [aurukun@glencore.com.au](mailto:aurukun@glencore.com.au)

Alternatively, visit the project website at:



<http://www.glencore.com.au/en/who-we-are/metals-and-minerals/aurukun-bauxite/Pages/default.aspx>

We look forward to your input.

**Hansen Bailey**  
ENVIRONMENTAL CONSULTANTS

**GLENCORE**