

APPENDIX A

**Statement of Heritage Impact – Wambo
Homestead Complex (EJE Heritage 2016)**

Statement of Heritage Impact Wambo Homestead Complex

United Wambo Open Cut Coal Mine Project

Client:
Umwelt (Australia) Pty Limited
on behalf of
United Collieries Pty Limited - Glencore



412 king street
newcastle nsw 2300

p 02 4929 2353
f 02 4926 3069
e mail@eje.com.au

ACN 002 912 843
ABN 82 644 649 849

TABLE OF CONTENTS

1. INTRODUCTION.....	3
1.1 INTRODUCTION AND PURPOSE.....	3
1.2 METHODOLOGY AND PREVIOUS REPORTS.....	3
1.3 LOCATION AND ACCESS.....	4
1.4 CONSTRAINTS AND LIMITATIONS.....	8
1.5 HERITAGE LISTING	8
1.6 ABBREVIATIONS.....	9
2. HISTORICAL CONTEXT.....	9
2.1 A BRIEF SITE HISTORY.....	9
2.2 CONSERVATION MANAGEMENT PLAN 2006 AND CMP REVIEW 2012	10
3. EXISTING CONDITIONS.....	11
3.1 WAMBO HOMESTEAD COMPLEX	11
3.2 PRECINCTS AND CURTILAGE.....	14
3.3 PHOTOGRAPHS OF EXISTING.....	14
4. HERITAGE SIGNIFICANCE.....	16
4.1 ASSESSMENT AND EXISTING STATE LISTING	16
4.2 THE SETTING AND HERITAGE SIGNIFICANCE	17
5. THE PROPOSED DEVELOPMENT	19
5.1 THE PROJECT.....	19
5.2 DEVELOPMENTS NEARBY AND DAMAGE MITIGATION MEASURES.....	19
6. STATEMENT OF HERITAGE IMPACT	22
7. BIBLIOGRAPHY AND REFERENCES	24
8. ANNEXURE.....	25

1. INTRODUCTION

1.1 INTRODUCTION AND PURPOSE

EJE Heritage has been engaged by Umwelt (Australia) Pty Limited (Umwelt) to prepare a Statement of Heritage Impact for the State Listed heritage item known as the Wambo Homestead Complex.

The United Wambo Open Cut Coal Mine Project (the Project) proposes to combine the existing open cut operations at Wambo with a proposed new open cut coal mine at United. The Wambo Homestead Complex is located adjacent to the existing Wambo Mine operations, near Warkworth NSW.

This Statement of Heritage Impact has been prepared to address the Secretary of the Department of Planning and Environment's Environmental Assessment Requirements (SEARs) (dated 15 December 2015) and the specific requirements of the NSW Heritage Council (dated 15 July 2015) which states:

"A detailed Heritage Impact Statement (HIS) should be undertaken which documents and assesses the heritage significance of the site and its associated landscape, and any impacts the project may have upon this significance. This assessment should address the potential archaeological impacts of the project and any heritage impacts to the Wambo Homestead Complex. The HIS should include detailed mitigation measures to offset the impacts this project may have on the site's heritage values. The Heritage Council would be happy to review any further documentation that may address any likely heritage impacts to State Heritage Register listed items, State significant items and any historical archaeology".

It is also noted that the Secretary's Environmental Assessment Requirements 27th of July 2015 or SEARS (Section 78A(8A) of the Environmental Planning and Assessment Act 1997 , State Significant Development) requires, amongst other things for Application SSD 15_7142, an Environmental Impact Statement that will also address Noise and Blasting including *a detailed assessment of the likely blasting impacts of the development (including noise, vibrations, overpressure, visual and odour) on people, livestock, **heritage items**, infrastructure and significant natural features, having regard to the relevant ANZECC guidelines and relevant agency requirements.* The EIS is also to address Heritage including *an assessment of the likely impacts of the development on non-Aboriginal heritage, paying particular attention to its **settlement by Europeans and pastoral history** and having regard to the OEH's requirements (as outlined in the OEH letter referred to here, above).*

1.2 METHODOLOGY AND PREVIOUS REPORTS

This report relies upon information provided by Umwelt and the "Wambo Homestead Complex – Conservation Management Plan Review", prepared by Godden Mackay Logan (GML) for Wambo Coal Pty Ltd July 2012 (CMP 2012). That document set out to review and update the Conservation Management Plan for Wambo Homestead, Jerry's Plain Road, Warkworth 2006, previously prepared by this office. GML had also prepared a draft "Wambo

Homestead Complex Heritage Strategy, 2010 and “Wambo Homestead Complex Schedule of Conservation and Maintenance Works, 2011” that informed the CMP 2012.

This Statement of Heritage Impact has also been guided by the NSW Heritage Office’s published guidelines “Statements of Heritage Impact”, “Wambo Homestead- A Conservation Plan, 1994” (a thesis by B.Collins for the Master of Science) and subsequent periodic photographic records.

Also correspondence between Wambo Coal and the consultant structural engineer, Bill Jordan & Associates, between Wambo Coal and the Heritage Office, reports by the engineer including WHC Annual Structural Assessments, Site Visits and Blast Impact, Vibration Vulnerability Assessment, vibration data review with commentary and Following Blast Exceedances, were reviewed.

This Statement of heritage Impact was prepared by members of the EJE heritage team including:

- Barney Collins, Heritage Architect and Director.
- Mark Fenwick, Heritage Architect.
- Courtney Nix, Admin Assistant

This Statement of Heritage Impact should be read in conjunction with the whole of the CMP 2012 and the Historic Heritage Assessment for the Project (Umwelt 2016).

1.3 LOCATION AND ACCESS

The site of the Wambo Homestead Complex (WHC) is west of the village location of Warkworth, New South Wales. Refer to Figure 1.1 of the CMP.

The WHC is located to the south of the existing Wambo surface mine workings and north of Wambo Creek.

It is identified as Lot 82 of Deposited Plan 548749.

Location is approximately 32° 34’ 56.90 “S and 150° 59’ 34.70 “E.

Access for visitors is very limited and is via the mine’s main office, by prior arrangement.

The location of the WHC in relationship to the existing workings is shown by the following aerial view.



Figure 1.3.1. Local aerial view showing WHC in relation to existing workings.

Source NSW Government , SIXMAPS.

These workings in the context of the wider region are shown in relationship to other coal mines by the following aerial view.

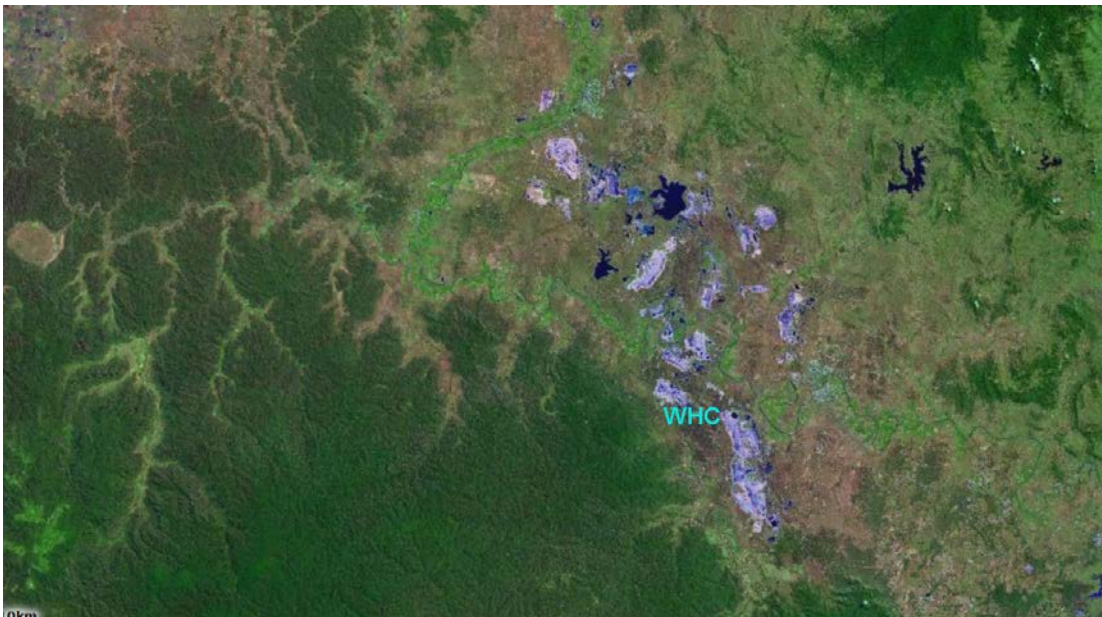
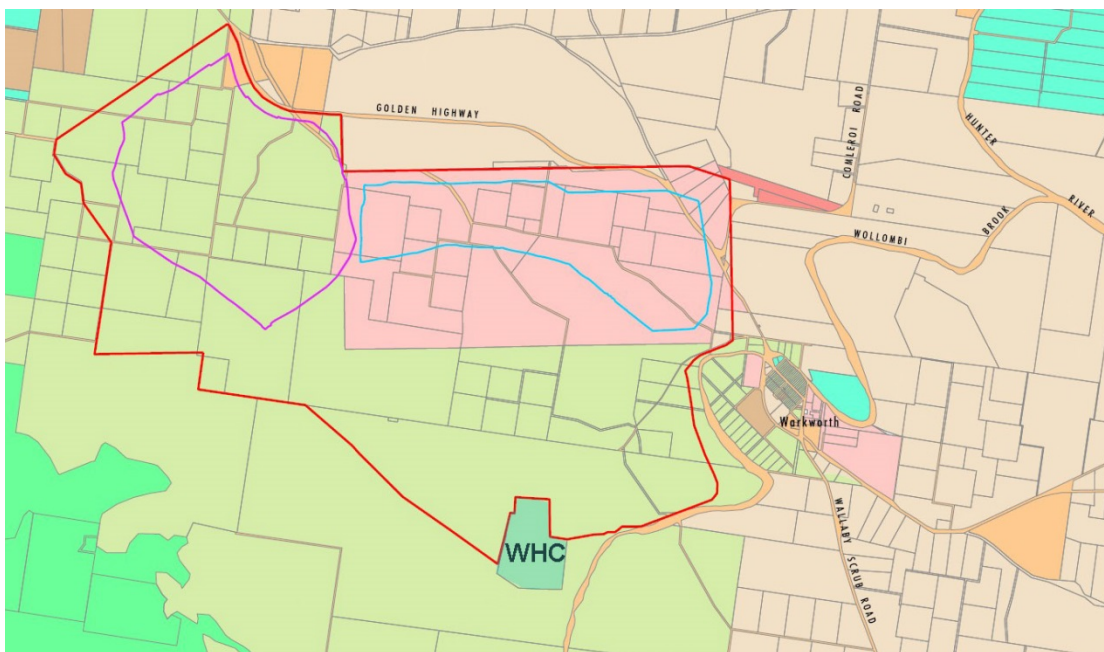


Figure 1.3.2. Wambo Mine and WHC location.

The site of the proposed new open cut pits are shown by the following diagrams.



Figure 1.3.3. Red line is project site, WHC is shown outside project site. Note Warkworth to the east.
Extract from Umwelt Page 6 Figure 1.3 'The Project'



Data Source: LPMA (2009), Department of Natural Resources (2005)

Legend

- | | | |
|---|--|--|
| Project Area | Other Mine Operations and Buffer Land | Vineyards on Mine Owned Land |
| Proposed Conceptual United Open Cut Pit | National Park | Gliding Club |
| Proposed Conceptual Wambo Open Cut Realignment | Wambo Operations and Buffer Land | Government Authority (Federal, State or Local) |
| Woodland Area - Private Management | United Operations and Buffer Land | Rural Residential |
| Mixed, Grazing and Cropping Land | Vineyards | |

File Name (A4): R02/3509_055.dgn
 20150630 13.44

Figure 1.3.4. The WHC in context. Extract from Umwelt Page 42 Figure 6.3 Land Use

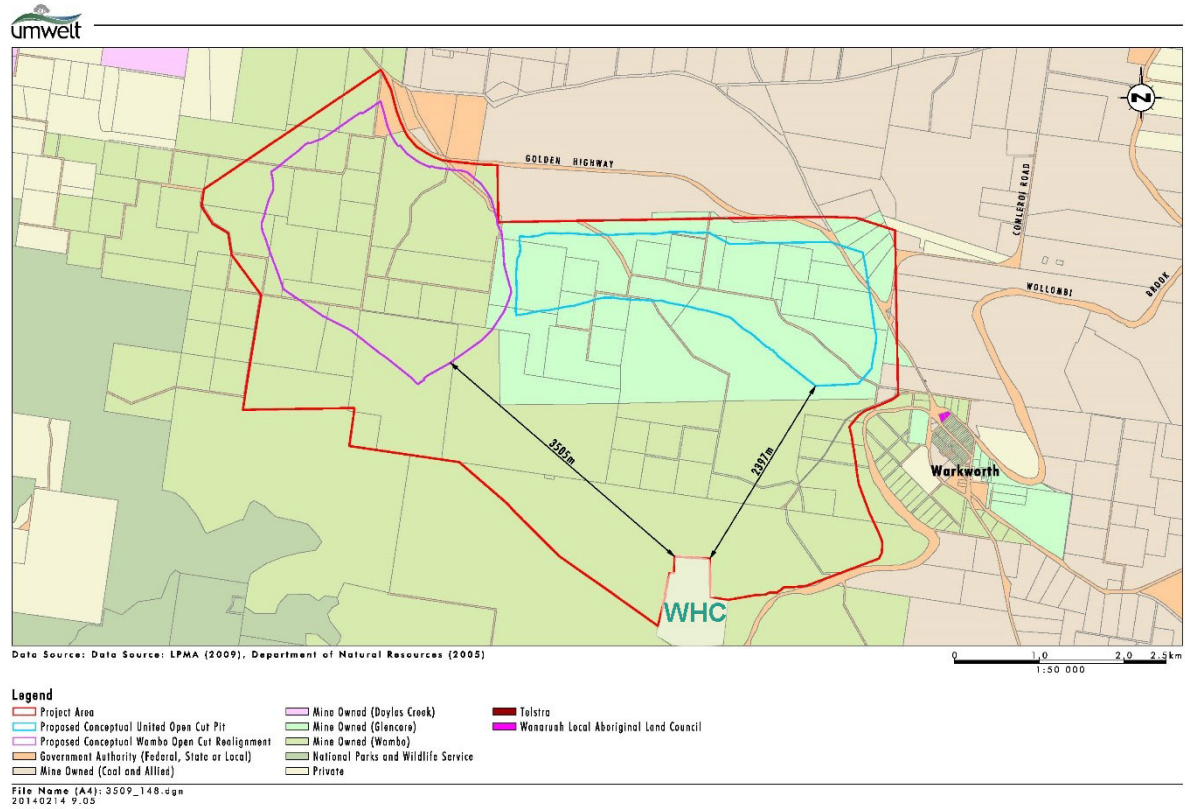


Figure 1.3.5. The WHC in context with distances 3.505 km and 2.397 km shown.

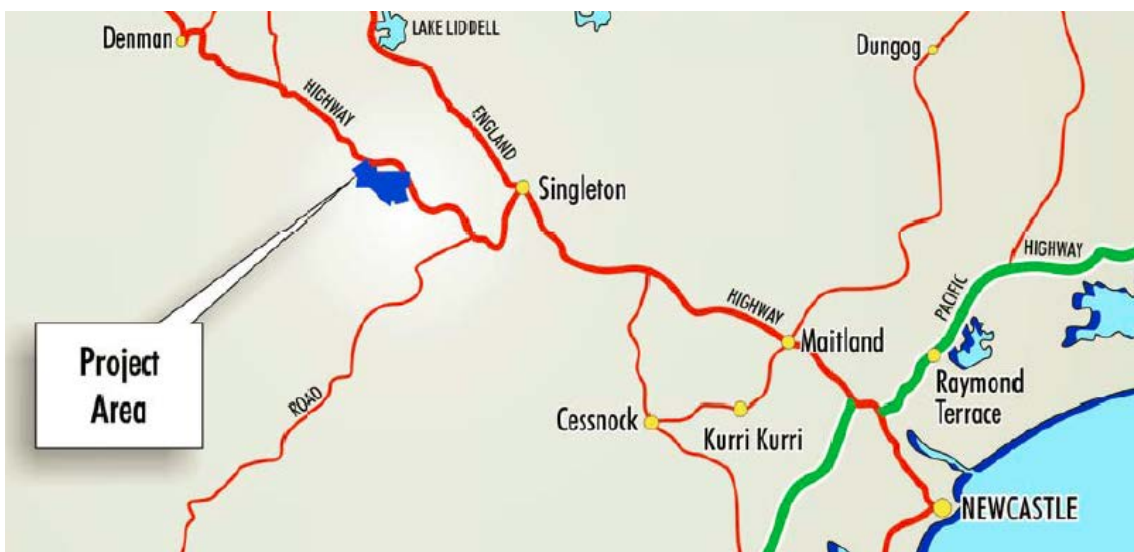


Figure 1.3.6. The WHC and location within the Hunter region.

Extract from Umwelt Page 4 Figure 1.2 Locality Plan

1.4 CONSTRAINTS AND LIMITATIONS

EJE Heritage did not visit the sites of the proposed open-cut mines as the relevance is limited given the existing conditions and planned distance from the heritage item. The area is a working mine site. EJE Heritage have carried out periodic photographic recording at the Wambo Homestead Complex.

EJE is not qualified to offer structural opinions. This report is not intended to convey any opinion as to the structural adequacy or integrity of the structure, nor should it in any way be construed as so doing. Similarly, the author's observations are limited to the fabric only: The author does not comment on the capacity, adequacy, or statutory compliance of any building services.

1.5 HERITAGE LISTING

The site is located within the local government area of Singleton. It was listed under the *NSW Heritage Act 1977* in 1999. The Wambo Homestead Complex has been protected under a Permanent Conservation Order since 1982. It was included on the Singleton Shire Council's Local Environment Plan in 1996. The site is now listed on the following heritage registers:

- **State Heritage Register - Heritage Act 1977 (NSW)** (extract follows here)
 The listing Number is SHR 00200:

Heritage Listing	Listing Number	Gazette Date	Gazette Number	Gazette Page
Heritage Act - State Heritage Register	00200	02 Apr 99	27	1546

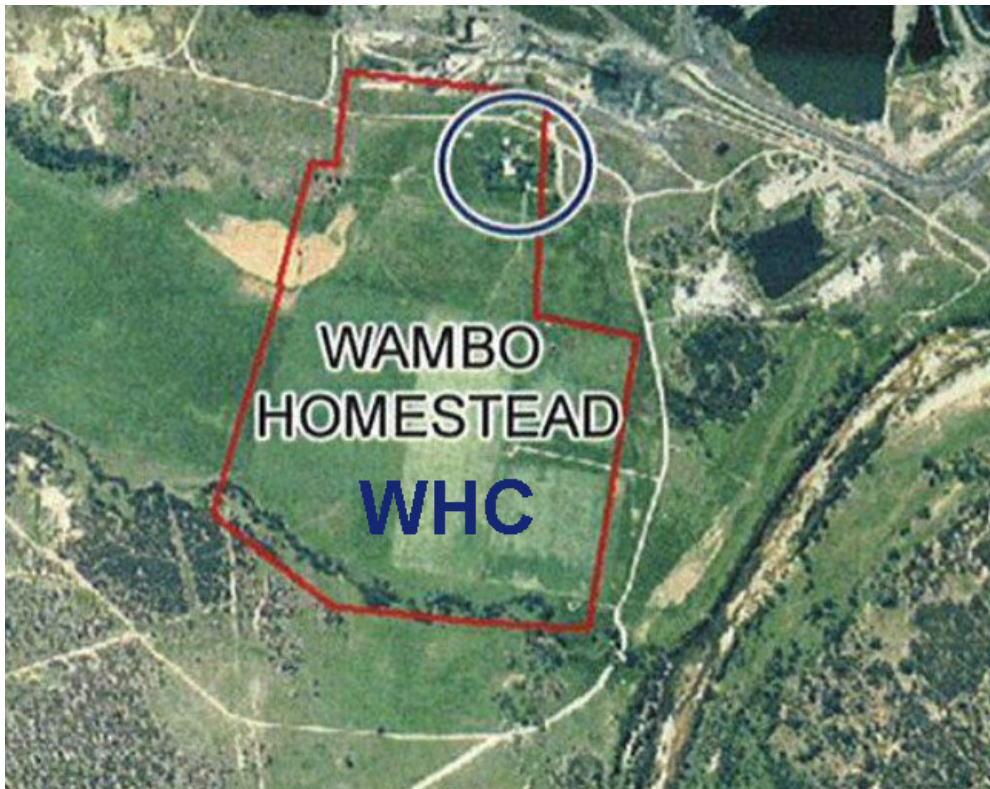


Figure 1.5 Listed Site -The circle indicates the location of the homestead buildings. The red outline indicates the curtilage as identified in the State Listing under the Heritage Act. Wambo Creek is located at the bottom (southern edge). Source: CMP 2012 GML.

- **Locally by Singleton Council Local Environmental Plan 2013 Schedule 5**
(an extract follows here):

Warkworth	"Wambo" homestead and outbuildings	Off The Golden Highway	Lot 82, DP 548749	State	1144
-----------	--	---------------------------	----------------------	-------	------

1.6 ABBREVIATIONS

Abbreviations used in the text include the following:

CMP	Conservation management plan	OEH	Office of Environment & Heritage
GML	Godden Mackay Logan	HIS	Heritage Impact Statement
WHC	Wambo Homestead Complex	SoHI	Statement of Heritage Impact
SHR	State Heritage Register	EIS	Environmental Impact Statement
WCPL	Wambo Coal Pty Ltd		
DA	Development Approval		
GTA	General Terms of Agreement		
AS	Australian Standard		
s.	Section (of the Act)		
LW	Long Wall		
AHD	Australian Height Datum		
RL	Reduced Level		

2. HISTORICAL CONTEXT

2.1 A BRIEF SITE HISTORY

In 1824 a Grant of 2,000 acres, including the site of the homestead buildings was made to Matthew Hindson, acquired soon after by James Hale. The estate was developed and acquired additional land. By the 1830's substantial buildings had been built, with the homestead building located over the ground floor storey and cellar of the later renamed "kitchen wing". Eight buildings of the homestead complex were constructed c.1833-1900.

Under the development and care of the Hale, Durham, Allen and McDonald families, Wambo Estate went on to produce wheat, lucerne, horses, cattle and sheep.

The Wambo property was purchased by a small group of individuals with mining interests in 1969 and has since had a range of owners. Underground operations in the vicinity of the property commenced in 1972 and in 1974 open-cut mining began as a small scale operation to supplement the underground production from the Wambo seam. Underground mining has been progressively expanded (J.Somerville, GML August 2010).

In 1971 John McDonald and Joan Blasic (nee McDonald) sold the remaining 3,000 acres (about 1,220 hectares) to the Wambo Mining Corporation. The mine sold a new smaller allotment of approximately 68 hectares, including the homestead back to Joan Blasic who lived there until 1983. The new owner John Birks attempted to live there but sold the property to the mine in 1985.

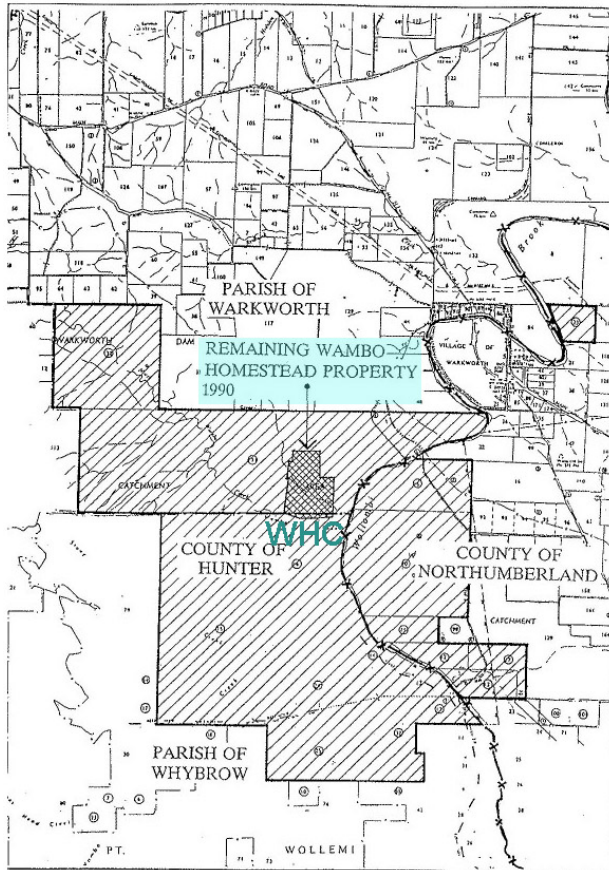


Figure 2.1 Plan comparing Hale's holding's and the remaining Wambo property in 1990. (source: B.Collins CMP)

Between 1982 and 1991 the property was owned by a combination of companies including Panaroya, Hartogen, Total Australia, GIO and CdF Minerals. It was transferred to Sumito Coal Mining Ltd (now Sumiseki) in 1991 who managed the site until purchased by Excel Coal in 2001. The current owners Wambo Coal Pty Ltd, consists 75% Peabody Energy and 25% Sumiseki have operated the site since October 2006 (J.Somerville, GML August 2010).

Refer also to the CMP 2012 GML, Annexure B 'History of Wambo Estate', Warkworth by Professor Ian Jack, University of Sydney 2012 for a full detailed history.

2.2 CONSERVATION MANAGEMENT PLAN 2006 AND CMP REVIEW 2012

The site was heritage listed in 1999. The CMP 2006 and the CMP 2012 both discuss and elaborate on the Wambo Homestead Complex's State Significance. The 2012 review confirms that the historic evolution of the place is significant; that it is a rare surviving example; that it is significant by association; that it possesses a large and important group of C19 and early C20 homestead buildings, providing layers of evidence for change and adaption and that it has high social significance and research potential.

The CMP 2012 acknowledges that the condition of some surviving fabric has deteriorated, affecting the long-term integrity of a number of "key components". It also states that the place has potential to contain evidence of the evolution and operation of the site. This CMP

considers that in some areas of the site this evidence has not been subject to major disturbance.

The Statement of Heritage Significance provided by the CMP 2012 differs from the statement included with the State Listing. This CMP also discusses the requirement for reconstructing portions of the buildings particularly failed masonry, investigating ground salt attack on masonry and then slowing the deterioration of brick and stone structures, working towards successfully interpreting the significance of the place and maintaining the place.

Wambo Coal is responsible for the ongoing site management, maintenance and management of heritage significance for the Wambo Homestead Complex as outlined by the CMP 2012.

This current report supporting the SoHI is to be read in conjunction with the whole of the CMP 2012. This CMP also discusses the need to prepare immediate and long-term strategies for presenting the interpretation of the site and a plan for the future of the Wambo Homestead Complex after mining.

3. EXISTING CONDITIONS

3.1 WAMBO HOMESTEAD COMPLEX

During 2010, from January to October 2011 and while the CMP 2012 was being prepared a programme of stabilisation and conservation works were undertaken by the owner. In early 2010 the works were undertaken as part of a 'Voluntary Action Plan' (VAP), then a second stage of similar works was undertaken early 2012. In addition to these works, a significant project package has been completed for the Stud Master's Cottage (1830's-1840's) including a new roof.

These works are intended to protect significant components and fabric, *in situ*. The works also provided stabilising structures to facilitate longer term conservation. The works did not address degrading stonework and brickwork, caused by salt attack.

Although recent works have been undertaken to collect and divert water away from roofs and buildings, more of similar work is still required. This is important in slowing deterioration due to erosion around structures, damp and salt attack, keeping fabric dry to prevent rot, to prevent corrosion and to allow access to all spaces for ongoing maintenance. These works now need to be maintained and improved by additional measures.

It is clear from the CMP 2012 that the rate of deterioration over the last twenty years has been unrelenting. Elements dislodged by severe weather or inundated by surface water drainage were left unattended. The recent work to stabilise and protect has slowed the rate of deterioration. This maintenance, protection and stabilisation work must continue and be

revisited, to ensure that previous effort and expenditure continues to provide ongoing benefits to the place.

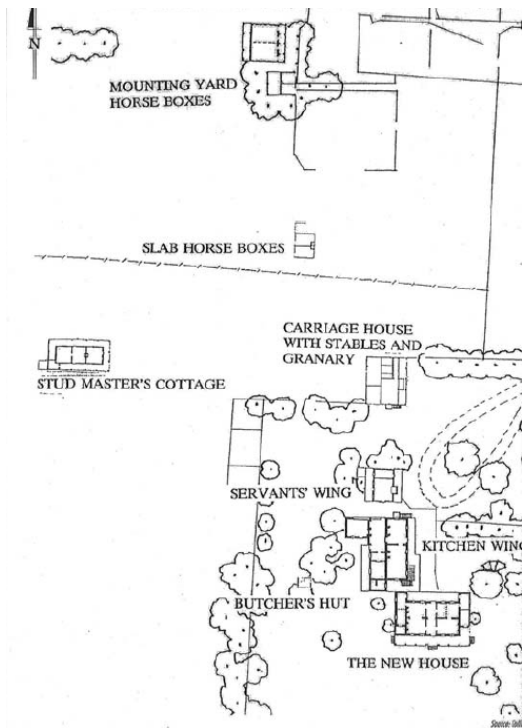


Figure 3.1 CMP site plan extract compared to aerial view of the site. The curtilage exhibits recent intrusions.

Generally, all CMPs have adopted the original naming of the buildings to promote consistency.

The circular mounting yard has undergone some maintenance and can be easily noted from the aerial photo. The fences are still existing but the top "Horses Boxes" has nearly completely collapsed.

The Servant's Wing now needs a main roof and side verandah roofs. It also needs safe access to the upper level to facilitate repairs and maintenance.

The main verandah of the New House requires stone repairs, reinstatement of verandah columns, straightening and support of the verandah roofs.

The following diagram from the CMP 2012 shows the current site plan and the following aerial view shows the location within the context of a working mine.

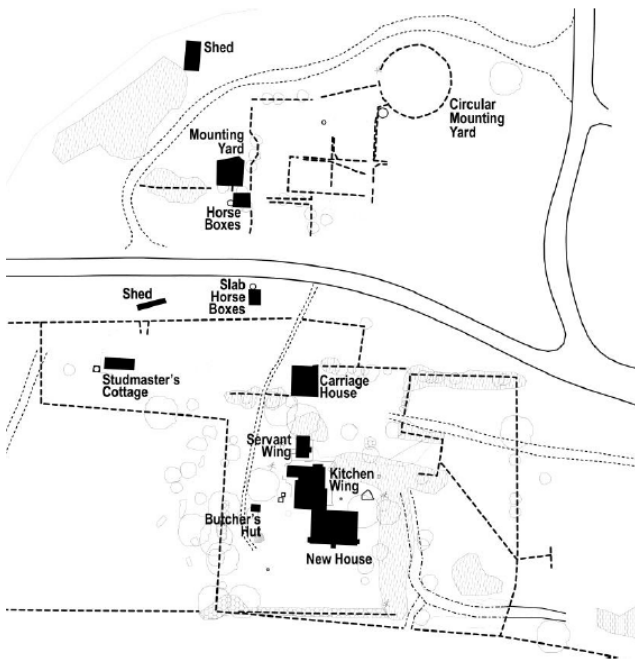


Figure 3.2 Current site plan with fences and buildings. Source CMP



Figure 3.3 aerial view WHC and the rehabilitated area to the north. Source: NSW SIXMAPS

3.2 PRECINCTS AND CURTILAGE

The CMP 2012 utilises four Precincts to describe and discuss the WHC.

These precincts are to be adopted as a site and conservation management tool and are as follows, with the addition of the overall heritage curtilage described in the State Listing as the 5th precinct.

- Precinct 1. Home Compound;
- Precinct 2. Stable Yards;
- Precinct 3. Stock Yards;
- Precinct 4. Stud Master's Cottage;
- Precinct 5. Heritage Curtilage (figure1.5 Listed Site).

Refer to the whole of the CMP 2012 for the Precincts.

Also refer to the Annexure A: Summary of Significance Diagram that also uses these precincts.

3.3 PHOTOGRAPHS OF EXISTING

The following photographs were taken by EJE heritage on 11 August 2015.

The CMP 2012 also provides a building-by-building examination of existing conditions (pages 31 to 48 inclusive). The following is an overview for the purposes of this Statement of Heritage Impact.



Image 01 New House: south elevation. Verandah stone work failing and roof dropping.



Image 02 New House: east elevation. Water ingress.



Image 03 New House: north elevation and Kitchen Wing (former house).



Image 04 New House: recent interior propping. Extensive cracking evident.



Image 05 New House: propping for temporary stabilisation has been installed. Obvious cracking.



Image 06 New House: south west corner, further collapse now evident.



Image 07 New House: shingle roofing, pressed metal ceilings and other "layers" evident.



Image 08 New House: west elevation. A+A and various materials. Link to kitchen.



Image 09 Butcher's Hut: temporary stabilisation works and protection of structure.



Image 10 Butcher's Hut: Interior cleaned out and self seeded plant removed.



Image 11 Kitchen Wing: south west corner. Water ingress, supports missing, close trees.



Image 12 Kitchen Wing: typical here, around this building and for other stone and masonry.



Image 13 Kitchen Wing: Interior. Dust in piles from decaying walls.



Image 14 Kitchen Wing: Interior. Recently cleaned out and swept.



Image 15 Kitchen Wing: Interior. Walls propped, materials retained in their location.



Image 16 Kitchen Wing: north east corner.



Image 17 Kitchen Wing: east elevation. Propping has been installed throughout.



Image 18 Kitchen Wing: stairs down to the cellar. Sandbagging installed to divert water away.



Image 19 Servants' Wing: salt attack obvious, roofs gone, roof failed, stairs missing. Brickwork failed.



Image 20 Carriage House: shingles and battens under metal roofs.



Image 21 Carriage House: requires temporary building bracing.



Image 22 Stud Masters': Tarpaulin removed, new roof reconstructed.



Image 23 Stud Masters': Extensive clean up and stabilisation. Brickwork failure.



Image 24 Mounting Yards and stockyards. Remnants are surviving. Requires protection.

4. HERITAGE SIGNIFICANCE

4.1 ASSESSMENT AND EXISTING STATE LISTING

The State heritage listing includes the following Statement of Heritage Significance:

Wambo Homestead Complex is state significant in the context of Australian pastoral activities and horse breeding in New South Wales and for its capacity to demonstrate the development of pastoral and agricultural activity in the Hunter Region--an important early region of colonial settlement.

This significance is strongly demonstrated in the survival of the core group of five early homestead buildings, constructed between the mid 1830s and mid 1840s, and in the relationship of all buildings and structures of the Wambo Homestead Complex to their setting and the landscape.

Wambo Homestead Complex is state significant as an important group of homestead buildings which remain substantially intact and which display the progressive architectural development of a typical Australian homestead group. It is also state significant for its capacity to demonstrate rare evidence of extensive early finishes in the fabric of the core group of 1830s and 1840s buildings, and for the retention of all original joinery of the four masonry buildings of this group. The New House is state significant for its refined design and capacity to demonstrate architectural ambition at an early stage of colonial rural settlement.

Wambo Homestead Complex is state significant for its rarity as an important homestead complex that was established by a former convict, in the Hunter Region, where most large estates were established by free settlement. The complex is significant for its associations with its original owner, the emancipist convict James Hale, who was responsible for the complex's core buildings and who, by 1844, had established himself as one of the top 100 landholders in the colony.

Although the Wambo Homestead Complex is in a 'rundown' condition, it still maintains and demonstrates its state significance.

Date significance updated: 01 Jun 04

Sightlines through and across the site of the Wambo Homestead Complex promote an understanding of its historical uses and management and need to be protected and managed.

Views out from the site to the east and west are now dominated by mining operations. The view to the north, across a portion of the previous open cut activity has been back filled and although no longer following the original contours, has been subject to some recent rehabilitation.

The major intrusive element to the setting is the haul road now dividing the complex of buildings and fences, running east / west through the site. This is to be removed as soon as it can be made redundant, followed by rehabilitation then reinstatement of fences and other structures.

The open-cut mining proposed as part of the project will be further than 2 kilometres away at the closest points between mine and boundaries of the WHC. It is therefore very unlikely that the new mine and changed operational model will have any additional detrimental impact on the setting, more than currently exists.

It is noted that emplacement areas will continue to be utilised for the Project and in some instances may be re-worked as part of the overall final landform and rehabilitation strategy for the Project. This will be consistent with existing views.

The distant backdrop view to the west (as shown on Figure 4.2) is the Wollemi National Park.



Figure 4.2 Photo: EJE Heritage August 2015.

5. THE PROPOSED DEVELOPMENT

5.1 THE PROJECT

The Project proposes to combine the existing open cut operations at Wambo with a new open cut coal mine at United. Note the diagrams in Section 1 of this report. The Project will allow for an integrated management approach including integrated mine design and management to minimise dust, noise, blasting and visual impacts, improved water management and an enhanced ability to respond to any issues or community concerns that arise.

The Project will also require the diversion of the Golden Highway, relocations of power transmission lines and easements, mine water management and an integrated rehabilitation strategy

5.2 DEVELOPMENTS NEARBY AND DAMAGE MITIGATION MEASURES

The current Development Consent DA 305 7 2003 (with approved modifications), includes approval conditions for monitoring vibration with respect to the Heritage Listed Item and a requirement for approvals under section 60 of the Heritage Act.

Blasting:

Condition 63. Ground vibration and air blast levels are to be monitored and recorded at a blast monitoring station to be established within the Wambo Homestead Complex for each blast within 2 km of the Wambo Homestead.

A review of correspondence between the appointed structural engineer and Wambo Coal and Peabody Energy with the NSW Office of Environment and Heritage confirms the measures employed to meet this requirement. These include a review of site recorded blast vibration data, annual structural inspections with reports and advice in the event of an exceedance. Also, the following is an extract from the recorded data showing the location 'Homestead (BM01) in columns 5 and 6. This is public information.

Peabody Wambo Blasting Results													
Peabody ENERGY				2015									
Blast Number	Date	Time	Blast ID	Homestead (BM01)		Kelly (BM02)		Muller (BM05)		Harris (BM03)		Thelander (BM07)	
				Overpressure dB(L)	Vibration (mm/sec)	Overpressure dB(L)	Vibration (mm/sec)	Overpressure dB(L)	Vibration (mm/sec)	Overpressure dB(L)	Vibration (mm/sec)	Overpressure dB(L)	Vibration (mm/sec)
1	2/01/2015	11:11:22	M23WVA1	NRR	~0.16	99	0.08	110.7	0.38	95.8	0.06	104.8	0.42
2	8/01/2015	14:35:22	M18WRA3	92.6	0.17	89.4	0.08	103	0.34	92	0.09	104.4	0.42
3	16/01/2015	15:09:17	BS3WRA1	102.8	1.24	99.4	0.52	96.3	0.23	110.3	0.61	105.1	0.24
4	16/01/2015	15:15:41	M16WTA2	92.1	0.13	111.7	0.1	103	0.6	104.2	0.13	99.1	0.6
5	23/01/2015	11:14:49	M16WMA2	94	0.14	93.6	0.11	108	0.43	95.2	0.16	106.1	0.44

Condition 64. A suitably qualified and experienced structural engineer, with expertise in vibration and blast monitoring is to be appointed to examine all monitoring records from the Wambo Homestead complex blast monitoring station. The appointment of the structural engineer is to be approved in writing by the Director of the NSW Heritage Office.

A letter from the NSW Heritage Office dated 30 November 2005 prepared by Ms Thomas on behalf of the Director Mr McDougall (contact: Mr Pringle) confirms that the nomination of "Bill Jordan of Bill Jordan and Associates as the structural engineer to perform the blast monitoring", dated 3 November 2005 was approved by the Heritage Office.

Condition 65. Ground vibration and air blast levels experienced at the Wambo Homestead Complex blast monitoring station are not to exceed the structural damage assessment criteria prescribed by the Australian Standard AS2187.2-1993 (or its latest version), "Explosives – Storage Transport and Use" for Sensitive and Heritage Structures to prevent damage to the heritage items.

Condition 66. The approved structural engineer is to report to the Applicant on the monitoring results each month for blasting within 2 km of the Wambo Homestead Complex and 6 monthly for the remainder of the open cut mining operation and make recommendations to ensure the conservation and prevention of damage to the significant heritage structures. Copies of these reports are to be forwarded to the NSW Heritage Office.

A review of correspondence between the appointed structural engineer and Wambo Coal and Peabody Energy with the NSW Office of Environment and Heritage confirms the measures employed to meet this requirement. These include a review of site recorded blast vibration data, annual structural inspections with reports and advice in the event of an exceedance.

Condition 67. The approved structural engineer is to inspect the Wambo Homestead Complex structures annually and as soon as practical, but no later than 3 days after blasting monitoring which exceeds the structural damage assessment criteria prescribed by AS2187.2-1993 (or its latest version). During the period between monitoring being recorded which exceeds the criteria in AS2187.2-1993 (or its latest version) and the engineer's inspection, ground vibration from blasting is to be limited to a level which will prevent further blasting damage. The structural engineer is to advise the applicant and the NSW Heritage Office of any action required to repair damage.

A review of correspondence between the appointed structural engineer and Wambo Coal and Peabody Energy with the NSW Office of Environment and Heritage confirms the measures employed to meet this requirement. These include a review of site recorded blast vibration data, annual structural inspections with reports and advice in the event of an exceedance.

Condition 68. The approved structural engineer is to make an assessment of whether blasting within 2 km of the Wambo Homestead Complex is to cease or be managed in order to stabilise or repair the damage, and so advise the applicant and the Director of the NSW Heritage Office. If blasting has been required to cease, it is not to resume until the damage has been stabilised or repaired, and the written approval for the resumption has been issued by the Director of the NSW Heritage Office.

We are informed that this Condition has not been triggered.

At the Wambo Homestead Complex site:

The most intrusive development at the listed site, apart from blasting vibration is the coal haul road. Current obligations require its removal when redundant and the reinstatement of pre 1999 site conditions and the temporarily removed fencing. The ongoing conservation challenges include water ingress, stone and brick erosion due to salt attack from the ground, vegetation and animal damage and vibration. It is noted that these challenges will not be exacerbated by the Project.

Beneath the Wambo Homestead Complex:

The Project does not include work at or below the WHC. The approved North Wambo Underground Mine does not include the area immediately beneath the homestead (refer to Figure 5.2). The Listed item is outside of the Project Area.

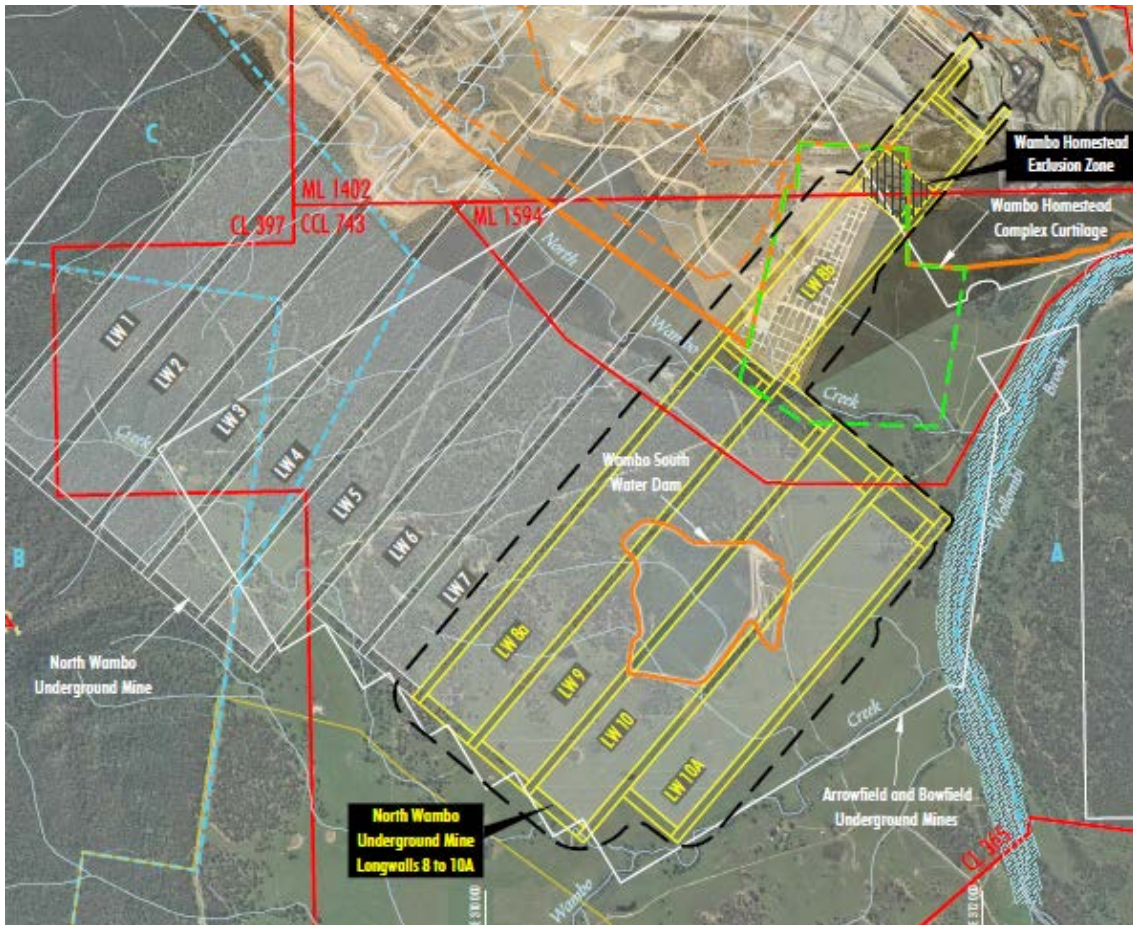


Figure 5.2 Approved Longwall Mining adjacent to Wambo Homestead

<https://mscusppegrs01.blob.core.windows.net/mmfiles/files/operations/australia/wambo/lw8-10a/extraction%20plan%20main%20document.pdf>

6. STATEMENT OF HERITAGE IMPACT

This is the Statement of Heritage Impact for:	<p>The Wambo Homestead Complex with regards to the Project. This proposes to combine the extraction and exploration rights of a number of mining tenements at the existing United Mine and the existing Wambo Mine, including development of a new open cut coal mine at United.</p> <p>At the south edge of the existing Wambo Mine site is located the Wambo Homestead Complex and its identified curtilage, a State Listed heritage item. This statement is to be read with the CMP 2012 and the Environmental Impact Statement for the United Wambo Open Cut Coal Mine Project.</p>
Date:	<p>This statement was completed 26th February, 2016.</p>
Address and Property Description:	<p>The WHC is located to the south of the surface mine workings and north of Wambo Creek. It is identified as Lot 82 of Deposited Plan 548749. Location is approximately 32° 34' 56.90 "S and 150° 59' 34.70 "E.</p>
Prepared by:	<p>EJE Heritage</p>
Prepared for:	<p>Umwelt (Australia) Pty Limited on behalf of United Collieries Pty Limited - Glencore</p>

The following are aspects of the proposal that have been considered with respect to the Wambo Homestead Complex:

Consideration	The Proposal
Water, vibration & dust:	<p>Is very unlikely to have an additional impact over the existing mining operations due to the distance between the proposed new open cut mine during its life, and the homestead complex.</p>
Existing buildings & Structures:	<p>New blasting to be monitored and vibration limited to prevent damage to the existing buildings and structures. Is very unlikely to have an additional impact over the existing mining operations due to distance between the new open cut mine during its life, and the homestead complex.</p>

Moveable Heritage:	It is very unlikely to have any impact on moveable heritage.
Protecting the curtilage:	It is very unlikely to have any impact within the boundaries of the listing.
Sight lines & View Corridors:	It is very unlikely to have any impact on the existing sightlines and view corridors within the complex and to those immediately beyond. The emplacement areas to the north will increase in height, however these should be generally consistent with existing views. This will improve as rehabilitation progresses.
Landscape elements:	It is very unlikely to have any impact on landscape elements with respect to WHC, within the listed site. Given the uphill gradient and distance away from the proposed workings, infrastructure and emplacement to the north, it is very unlikely to change the existing landscape conditions in a way that will impact on WHC.
Archaeological resources:	It is very unlikely to have any impact on archaeological resources within the immediate curtilage of the WHC.
Social Impact:	It is very unlikely to have any further social impact given the Project will include the continuation of Wambo's operations and that the proposed United Open Cut will be located further to the north of the existing Wambo operations.
Protecting overall significance:	There is no obvious reason why the management of the heritage significance and protection of the place would be adversely impacted upon by the Project.

For Setting and Curtilage:

For Character, Sightlines & View Corridors:	The proposal is very unlikely to have any impact on the character, sightlines and view corridors associated with the WHC. The emplacement areas will increase in height, however these should be generally consistent with existing views.
For Landscape Elements:	The proposal is very unlikely to have any impact on the landscape elements associated with the WHC or still contributing to the heritage significance of the WHC.

The following actions are recommended to mitigate further detrimental impact on of the heritage significance of the item and area:

Approvals:

Approval and Conditions of Approval relating to the Project.

Recommendation:

1. That the conditions for approval under the current DA-305-7-2003 for blasting, numbers 63 to 68 inclusive be included in any approval for the Project.
2. That the undertakings outlined in the final EIS be incorporated into the approval conditions and be the responsibility of all parties to the Joint Venture.

These conclusions have been reached with reference to previously assessed and determined significance for the place and its curtilage (*The Heritage Act 1977*, the State Listing and as per the NSW Heritage Office published guidelines); previous site inspections, a review of the area's history and the scope for the Project and information provided to us by Umwelt.

7. BIBLIOGRAPHY AND REFERENCES

- Reports: "United and Wambo Open Cut Coal Mine Project- Preliminary Environmental Assessment" Umwelt for United Collieries Glencore, June 2015 (The PEA).
 "Wambo Homestead A Conservation Plan" B.Collins, thesis M.Sc. (Arch) (Con), 1994 (incorporating drawings and photos from 1994)
 "Wambo Homestead Complex Conservation Management Plan Review" report prepared for Wambo Coal Pty Ltd July 2012 by Godden Mackay Logan Pty Ltd
 "Wambo Homestead Complex Schedule of Conservation and Maintenance Works , addendum to Wambo Homestead CMP (June 2006) Draft Report prepared for Wambo Coal Pty Ltd August 2011 by Godden Mackay Logan.
 "Wambo Homestead Complex Heritage Strategy Preliminary Working Draft report prepared for Wambo Coal Pty Limited August 2010 prepared by Godden Mackay Logan.
 Photographic record prepared for Wambo Coal Pty Ltd August 2015 by EJE heritage.

Correspondence reviewed with respect to Compliance and previous Development Approval Conditions:

Date	type	topic	from	to
2005.11.30	letter	Engineer's appointment	NSW HO	WC
2005.12.22	letter	Confirms appointment of engineer, report and monitoring results	WC	NSW HO
2006.01.12	letter	Essential maintenance and termites	NSW HO	WC
2006.01.18	letter	Archival record	WC	NSW HO
2006.04.13	letter	Monitoring report and site visit	Jordan	WC
2007.12.11	Letter/report	Annual report	Peabody	D of P

2008.02.12	letter	Re compliance/ monitoring	Peabody	NSW HO
2008.02.12	letter	Blast monitoring	Peabody	D of P
2008.11.14	letter	engagement	Jordan	WC
2008.12.24	Letter /report	Inspection, Blast records	Jordan	WC
2010.12.23	letter	12months no mining in near pit	Peabody	NSW HO
2011.05.05	letter	Advice re exceedance/site visit	Jordan	WC
2011.12.15	letter	engagement	Jordan	WC
2011.12.16	Annual report	Inspection and monitoring	Jordan	WC
2012.04.01	report	Wambo Homestead-Blast vulnerability	Jordan	WC
2014.01.08	letter	engagement	Jordan	WC
2014.09.23	letter	Vibration assessment report	Jordan	WC
2015.11.05	Letter/report	Annual report	Jordan	WC

8. ANNEXURE

Refer to the Annexure A: Summary of Significance Diagram.

SUMMARY OF SIGNIFICANCE DIAGRAM

LEGEND:

AREAS SHOWING KEY COMPONENTS AND PRECINCT BOUNDARIES

1. HOME COMPOUND
2. STABLE YARDS
3. STOCK YARDS
4. STUD MASTER'S COTTAGE

GRADES OF HERITAGE SIGNIFICANCE OF COMPONENTS AND ATTRIBUTES OF WAMBO HOMESTEAD COMPLEX

- E EXCEPTIONAL
- H HIGH
- M MODERATE



NOTE: GRADES OF SIGNIFICANCE OF COMPONENTS AND ATTRIBUTES TO BE ANALYSED IN CONJUNCTION WITH PAGE 70 OF CMP JULY 2012 (TABLE 5.2) FOR FULL DESCRIPTIONS OF EACH ELEMENT

AREAS OF HISTORICAL ARCHEOLOGICAL POTENTIAL AND POTENTIAL ARCHAEOLOGICAL ELEMENTS

- HIGH ARCHAEOLOGICAL POTENTIAL
- MODERATE ARCHAEOLOGICAL POTENTIAL
- POTENTIAL ZONE FOR DOMESTIC RELATED OCCUPATIONAL DEPOSITS AND ARTEFACTS



NOTE: ARCHAEOLOGICAL INFORMATION AND ZONING TO BE ANALYSED IN CONJUNCTION WITH PAGE 55 OF CMP JULY 2012 (FIGURE 3.94)

