

Aurukun Bauxite Project

EIS Information Sheet 2



Bronwyn Pressland engaging with the men of the Wik and Kugu Art Centre

This EIS Information Sheet provides stakeholders with a summary of the key issues and questions that were raised during consultation conducted in 2019. It also provides Glencore's response to these issues and questions.

EIS Consultation Feedback

The Aurukun Bauxite Project (the project) involves the construction and operation of an open cut bauxite mine on a greenfield site located approximately 23 km to the north-east of Aurukun and 35 km south of Weipa on the traditional lands of the Wik Waya people.

An Environmental Impact Statement (EIS) is being prepared for the project to support applications for government environmental approvals. A stakeholder consultation program is also being undertaken as part of the EIS process. An overview of the project, the approvals process and the EIS stakeholder engagement program was provided in EIS Information Sheet 1.

EIS Information Sheet 1 was circulated to stakeholders between September and November 2019 as part of EIS issue scoping consultation.

The purpose of this first round of consultation was to identify stakeholders' issues and concerns relating to the project.

Community consultation activities in Aurukun included:

- A staffed public display at the Town Square;
- Meetings with community members at the Glencore office; and
- Discussions with Aurukun business operators, service providers and community organisations e.g. Aurukun PCYC.

Meetings were also held with stakeholders located outside of Aurukun, including Weipa service providers, owners of nearby pastoral properties, local government authorities, state government agencies, Aurukun

inmates at Lotus Glen Correctional Facility and commercial and recreational fishing groups and charter boat operators.

Thank you to everyone who participated in the 2019 EIS consultation.



Bronwyn Pressland, Stella Owokran and Lauren Jessup



Project Consultation at Amban

Key Stakeholder Issues

ACCESS TO COUNTRY

Traditional Owners raised concerns in relation to the potential impacts of the project on their ability to access traditional country.

Glencore understands how important access to country is for Traditional Owners. During all phases of the project there would be some areas of the project site that would be inaccessible to the public and Traditional Owners for safety reasons. These areas include active mining areas, the Mine Infrastructure Area and the Coastal Loading Facility (CLF). Once mining is complete and the land has been rehabilitated, Traditional Owners would again be able to access these areas.

The project will not restrict access for Traditional Owners to key community use areas e.g. Amban Outstation or Waterfall. Access across the project site to these areas and to Norman Creek will continue to be provided.

PLACES OF CULTURAL SIGNIFICANCE

Traditional Owners expressed concern in relation to the potential impact of the project on cultural heritage values within the project site.

A cultural heritage assessment is currently being undertaken to assess the cultural heritage values of the project site. This work is being undertaken in partnership with directly affected Traditional Owner families. Where possible, mine planning will seek to avoid areas of cultural heritage significance. Through the Agreement making process, Glencore is working with directly affected Traditional Owner families to identify ways to avoid and or manage impacts to cultural heritage values.

The Social Impact Assessment, which forms a component of the EIS, will describe the potential impacts of the project on the values, aspirations and cultural identity of Traditional Owners.

WATER

Traditional Owners raised concerns about the potential impact of the project on the water quality and flows in the Ward River catchment.

Glencore acknowledges that Coconut Creek and Tapplebang Creek are of significant environmental and cultural value to the Traditional Owners. The Ward River is also an important natural resource for the Aurukun Community. A key objective in developing the project mine plan is to minimise the environmental impact of the project on Tapplebang Creek and Coconut Creek, and downstream environments.

EIS studies, including Surface Water, Groundwater, Aquatic Ecology and Geochemistry, will be undertaken to assess potential impacts on water resources and identify any necessary mitigation measures.

BAUXITE SPILLS

Stakeholders were concerned about the potential for bauxite to spill into the ocean during the transshipment operations.

The EIS will describe the spill prevention and control mechanisms that are being included in the design of the Load-out Jetty and the Transshipment Vessel (TSV).

The design of the TSV would also include a covered hold where bauxite would be stored during transit to the offshore transshipment zone. Bauxite would be transferred from the TSV directly into the hold of the Ocean Going Vessel by an enclosed conveyor system and discharge boom.

DUST

Stakeholders expressed concern regarding the project's potential to generate dust and the impact of this dust on the natural environment and amenity, particularly at Amban Outstation.

A number of key dust controls have been incorporated into the design of the project. Mine haul roads would be watered to minimise dust and the Product Haul Road would be sealed. The product bauxite would be wet on arrival at the CLF because it would have been washed in the Beneficiation Plant. Product bauxite stockpiles at the CLF would have sprinklers to maintain moisture levels and minimise dust.

The EIS will include an Air Quality Study that will quantify the dust impacts of the project and describe dust control measures. The study will include an assessment of potential dust impacts on Amban Outstation.

POST-MINING LAND USE

Stakeholders indicated strong interest in potential final land use options for the project site and CLF area.

The mine site is located on Aboriginal Freehold Land. This means that it is private land and the directly affected Traditional Owner families will need to have their say about the potential future uses of the land after mining has finished.

Glencore has established a Project Working Group (WG) with the Wik Waya Traditional Owners and Ngan Aak-Kunch (NAK). Glencore is undertaking post-mining land use discussions with Traditional Owners, through the WG. The WG has initiated an Aspirations Project. As part of this project, Traditional Owners will be considering future (post mining) land use options for the project site.

REHABILITATION

Stakeholders sought clarification in relation to the proposed approach to mine site rehabilitation.

As part of the EIS, a Progressive Rehabilitation and Closure Plan (PRCP) is being prepared. The PRCP will describe the proposed mine rehabilitation and the post-mining land use. The project cannot proceed until the Queensland Government has approved the PRCP. The PRCP would need to consider the outcomes of the discussions that Glencore is having with the Traditional Owners about rehabilitation and post-mining land use. Glencore would also need to implement a comprehensive, long-term monitoring program to evaluate the success of mine rehabilitation.

Perceived Benefits

Traditional Owners expressed a belief that the project would generate employment opportunities for the Aurukun community. However, the community also acknowledged the existing barriers to employment e.g. the health and wellbeing of local people. Some stakeholders expressed

a hope that the project would create new business opportunities in Aurukun that local people could own and/or participate in. Directly affected Traditional Owners expressed a keen desire to see the project result in improved access to, and use of, traditional country.

Glencore wants to ensure that any benefits from the project can support the aspirations of the Aurukun community and the Traditional Owners.



Cultural Heritage Project Activities with Imani Tamwoy and Cathy Owokran

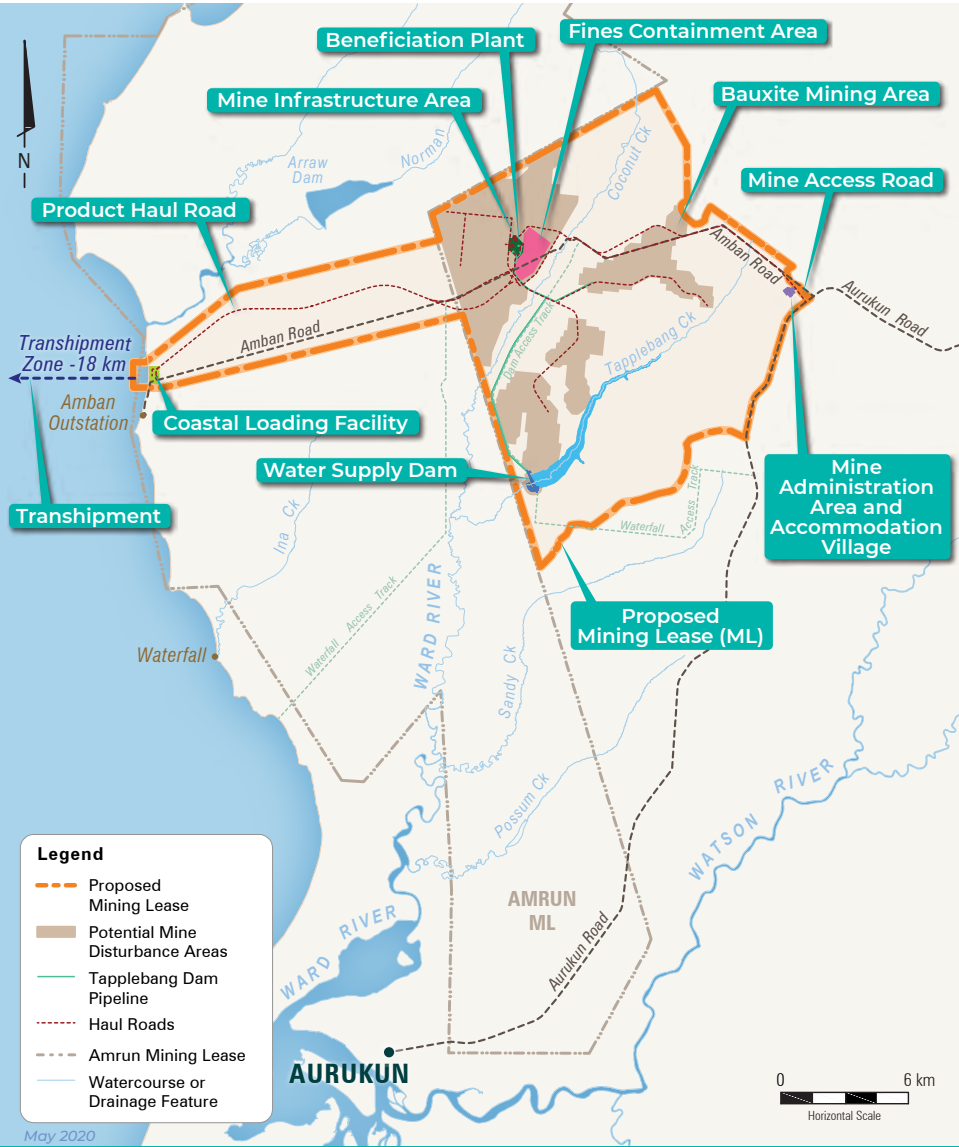


Figure 1 Indicative Project Layout



Community Engagement



Working Group Meeting

Common Stakeholder Questions

When will the project start?

There are a number of approvals required before a final decision to develop the project can be made. Regulatory approvals are required from the State and Federal Government. An Agreement with the Traditional Owners and NAK is also being sought, as well as support from potential bauxite customers.

Does the project require an Agreement with Traditional Owners?

The project is located primarily on Aboriginal freehold land which is also Wik Waya traditional land. NAK, on behalf of the Wik Waya people, hold the Native Title rights and Aboriginal freehold rights over the project area. Glencore is seeking an Agreement with the relevant Traditional Owners for the project site. NAK is also involved in this agreement making process.

When can I get a job? Will you employ locals?

The mine would operate for approximately 22 years and would employ, on average, 380 workers during operations. Glencore is seeking to maximise employment opportunities for local Aurukun people. Employment preference would be given to persons who identify, or are recognised, as a Wik or Wik Waya Traditional Owner. Glencore will be developing a local workforce plan that is focussed on building the capacity of Aurukun community members to meet the requirements of key job opportunities with the project.

EIS Approval Process

Preparation of the EIS is currently underway. The EIS process is required to be completed before State and Federal Government approvals can be granted. The EIS process is administered by the Queensland Department of Environment and Science (DES). The EIS is a document that describes the potential environmental impacts of the project and explains how Glencore will manage any impacts.

It also describes the social and economic impacts and opportunities of the project and explains what actions Glencore will take to ensure the Aurukun community and Traditional Owners benefit from the project. Once complete, the EIS will be submitted to the DES. The EIS will then be placed on public exhibition and stakeholders will be invited to make submissions to the DES on the EIS.



Community Engagement

Further Information

If you require any further information about the project, please contact the project team:



aurukun@glencore.com.au

Alternatively, search "Aurukun Bauxite" on Facebook.



facebook.com/groups/679687692467840/

We look forward to your input.

Hansen Bailey
ENVIRONMENTAL CONSULTANTS

GLENCORE