

Liddell Coal Operations Pty Limited

**Salvage of Artefacts from LID 1
under Section 90 Consent #1443
Liddell Mine, Hunter Valley, NSW**

July 2006



TABLE OF CONTENTS

1.0	INTRODUCTION	1
1.1	LOCATION.....	1
1.2	SITE DESCRIPTION	1
2.0	THE SALVAGE	1
2.1	PARTICIPANTS IN THE SALVAGE.....	1
2.2	METHODOLOGY FOR THE SALVAGE.....	2
2.3	RESULTS.....	2
3.0	CARE.....	2
4.0	REFERENCES	2

FIGURES

1.1	Locality	1
1.2	Location of the LID 1 site	1

1.0 INTRODUCTION

Section 90 Consent #1443 was granted for Aboriginal sites LID1 and LID29-32 on 12 November 2002. At the request of Liddell Coal the LID1 site was salvaged by surface collection on 5 December 2002. LID 1 was salvaged earlier than the other sites due to mine pressure to impact on the area of the site. Salvage of the remainder of the sites was put on hold by Liddell Coal and subsequently the consent lapsed prior to LID29-32 being salvaged. On 1 March 2006 Liddell Coal made a subsequent application for Section 90 Consent for sites LID29-32. As part of the consent process the Department of Environment and Conservation requested a report on the collection of LID1.

The following brief report documents the methodology and results of that collection.

1.1 LOCATION

The Liddell Colliery is located approximately 25 kilometres north-west of Singleton, seven kilometres north-west of Ravensworth and 19 kilometres south-east of Muswellbrook. It is located between Lake Liddell and Bayswater Creek to the west and Bowmans Creek to the east. It is approximately 10 kilometres north of the Hunter River (refer to **Figure 1.1**).

1.2 SITE DESCRIPTION

The LID1 site was an artefact scatter located on a lower slope, just east of the Main Northern Railway (refer to **Figure 1.2**). When recorded during the initial survey for the Liddell Coal EIS (Umwelt 2001a and b) the site was described as containing two mudstone flakes and a mudstone flaked piece within an area 30 metres x 20 metres that had been affected by minor sheet erosion. The area had been disturbed by the formation of a vehicle track, a fibre optic cable, the construction of the railway and a culvert beneath the railway.

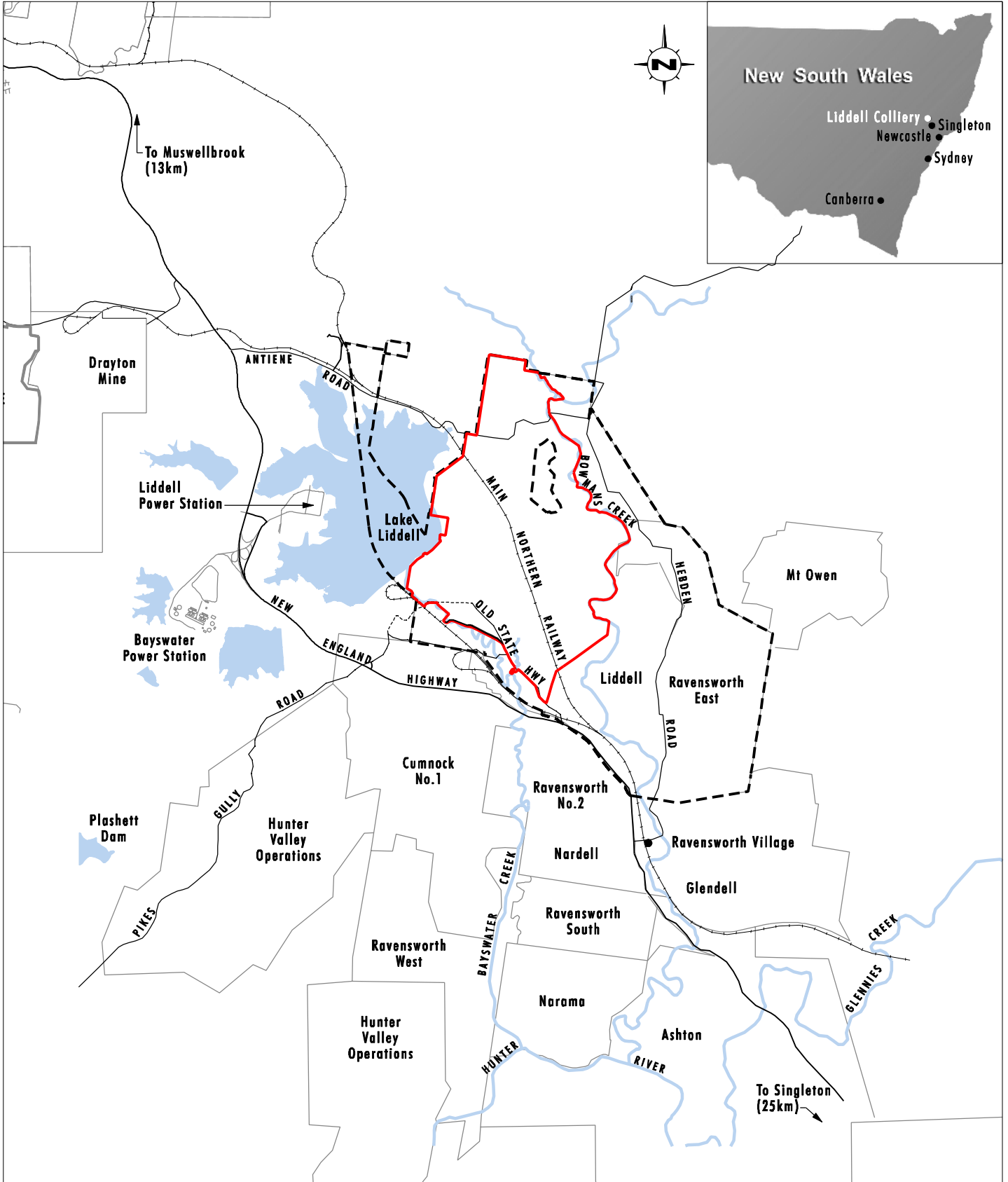
2.0 THE SALVAGE

The salvage of LID 1 was undertaken on the 5 December 2006.

2.1 PARTICIPANTS IN THE SALVAGE

The following people participated in the salvage:

- Lower Wonnarua Tribal Council: Maree Waugh and Glenn Miller;
- Wanaruah Local Aboriginal Land Council: John Matthews and Trevor Griffiths;
- Upper Hunter Wonnarua Council: Martin Feeney;
- Ungooroo Aboriginal Corporation: Rhonda Ward;
- Umwelt (Australia) Pty Limited: Jan Wilson and Leila McAdam; and
- Liddell Coal: Campbell Ball.



Source: Hunter Valley Coalfields 1:100 000 Map (DMR 2000)

0 2 4 6 km
1:120 000

Legend

- - Liddell Colliery Holding Boundary
- Area of Liddell Continued Operations
- Other Mining Lease
- Public Road
- Private Road
- Creek
- + + + Railway

FIGURE 1.1
Locality



Source: Liddell Coal
Note: Contour Interval 5m

0 50 100 200m
1:4000

Legend

- 11kV Electrical Cable Approx. Location
- 132kV Electrical Cable Approx. Location
- Underground Electrical Cable Approx. Location
- ⊗ Aboriginal Site Exposure
- Aboriginal Site (Lower Slope Landform Element)

FIGURE 1.2
Location of the LID 1 Site

2.2 METHODOLOGY FOR THE SALVAGE

The participants were escorted to the LID 1 area by Campbell Ball. A total of 1.5 hours was spent in the area during which the entire site area was systematically inspected on foot.

The site area was roughly triangular (100 metres wide at its widest end x 150 metres in length) in nature and had been fenced off by Liddell Coal as it was very close to active mine works. A minor tributary of Chain of Ponds Creek ran through the centre of this area and a dam and drainage channel had been constructed through the centre (prior to the site's 2001 location). The site was bounded by a road to the east and the Main Northern Railway to the west.

The collection was undertaken during a period of drought which provided greater ground surface visibility than during the 2001 survey.

2.3 RESULTS

The original site recording listed three artefacts. The intensive survey located a total of nine artefacts. All of the artefacts were broken flakes manufactured from mudstone. All of the artefacts were located within 15 metres of the minor tributary of Chain of Ponds Creek.

3.0 CARE

The artefacts have been retained by Umwelt for inter-site analysis following the salvage of sites LID29-32 (Chain of Ponds). The artefacts will then be placed in the "Care" of Wanaruah Local Aboriginal Land Council.

4.0 REFERENCES

Umwelt (Australia) Pty Limited 2001a. *Aboriginal Archaeological Assessment Liddell Colliery Continued Operations*. A report prepared for Liddell Coal Operations Pty Limited. October 2001.

Umwelt (Australia) Pty Limited 2001b. *Liddell Colliery Continued Operations Environmental Impact Statement*. A report prepared for Liddell Coal Operations Pty Limited. October 2001.

Umwelt (Australia) Pty Limited 2002. Section 90 Consent Application for LID1, LID29 – LID32.

National Parks and Wildlife Service 2002. Section 90 Consent #1443 granted 12 November 2002.

**Umwelt (Australia) Pty Limited
2/20 The Boulevard
PO Box 838
Toronto NSW 2283**

**Ph. 02 4950 5322
Fax 02 4950 5737**