

# Westside Mine News

## Voluntary Conservation Agreement

The development consent for the Westside Mine Southern Extension (DA 125-5-2002) specifies the establishment of a Voluntary Conservation Agreement (VCA) for the protection of the threatened species *Tetratheca juncea* and the endangered ecological community Sydney Coastal Estuary Swamp Forest Complex (SCEFC). Along with the designation of an area for the conservation of the threatened species and endangered ecological community, a Plan of Management is required to direct the management of this Conservation Area.

The VCA Plan of Management was submitted to the Department of Environment and Conservation (DEC) on 28 March 2006. The VCA was approved on 28 July 2006 after having been signed by the Minister for the Environment. The VCA covers 32ha of OCAL land and provides long-term protection for threatened species.

## Dust in Barnsley

In mid-2005, the issue of dust in Barnsley was raised in the local Sugarvalley Neighbourhood News. It was suggested by Sugarvalley Neighbourhood News that the dust was generated from the "Open Cut mine", Westside Mine. The Department of Environment and Conservation (DEC) contacted Westside Mine on 20th June 2005 to advise that a complaint, prompted by the article, had been made to the DEC by a Barnsley resident. A meeting was immediately held with the resident who contacted the DEC to assess the potential of dust pollution.

To address concerns, a dust gauge was placed by an independent laboratory on a privately owned residential property in Barnsley for a period of four months. The results from the four month study demonstrated that dust levels monitored on the property were well below the DEC guidelines and that Westside Mine has complied with the conditions of its Environment Protection Licence. A follow-up meeting was held with the resident on 21st December 2005 to discuss the results. The findings were reported to the DEC on 3rd February 2006 who was satisfied with the outcome.

## Biodiversity Monitoring

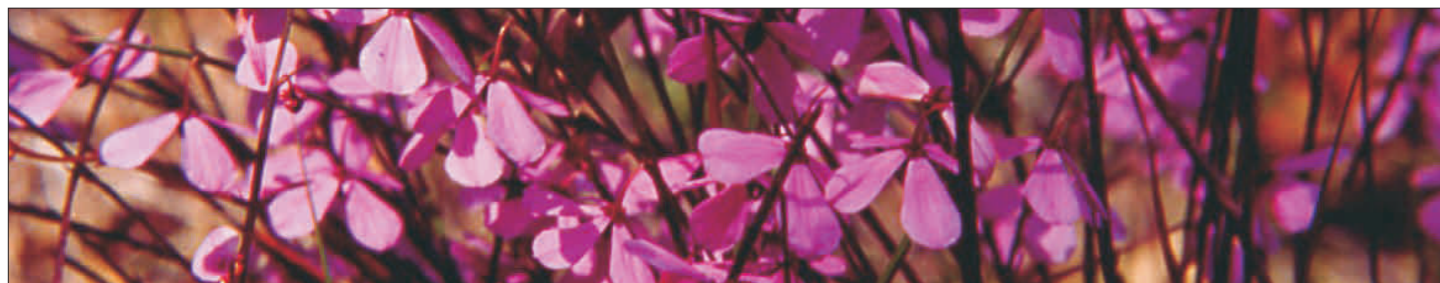
At OCAL, annual Biodiversity Monitoring is undertaken as a means of understanding the native composition of flora and fauna and how this may have changed during the life of the mines.



Review of Species composition at Westside Mine

The annual Biodiversity Monitoring Program will assist in:

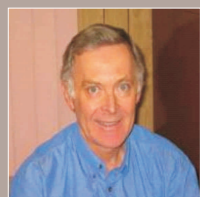
- re-establishing the right mix of plant and animal species upon mine closure; and
- identifying the number of different species present and/or the abundance of wildlife and employ methods to re-establish animal and plant communities to their original levels upon mine closure.



*Tetratheca juncea*: listed as vulnerable in New South Wales under the *Threatened Species Conservation Act 1995*. Found and protected on the Westside Mine mining lease.

## FURTHER INFORMATION

If you would like to discuss any aspect of our mining operations or environment and community management, please don't hesitate to contact the following people:



**Neil Rae**  
Westside Mine  
Operations Manager  
Ph: (02) 49551 144  
Fax: (02) 49551 121  
E: nrae@xstratacoal.com.au



**Lawrie Ireland**  
West Wallsend  
Operations Manager  
Ph: (02) 49412 108  
Fax: (02) 49532 986  
E: lireland@xstratacoal.com.au



**Kevin Parry**  
MCP  
Plant Manager  
Ph: (02) 49580 488  
Fax: (02) 49584 178  
E: kparry@xstratacoal.com.au



**Peter Costa**  
Teralba Colliery  
Mine Manager  
Ph: (02) 49580 205  
Fax: (02) 49584 468  
E: pcosta@xstratacoal.com.au



**Paul Amidy**  
Environment &  
Community Manager  
Ph: (02) 49412 163  
Fax: (02) 49552 314  
E: pamidy@xstratacoal.com.au

# OCAL Community Newsletter

Westside Mine, West Wallsend Colliery, Macquarie Coal Preparation Plant (MCP) and Teralba Colliery Community Newsletter. **December 2006, Issue No.1**

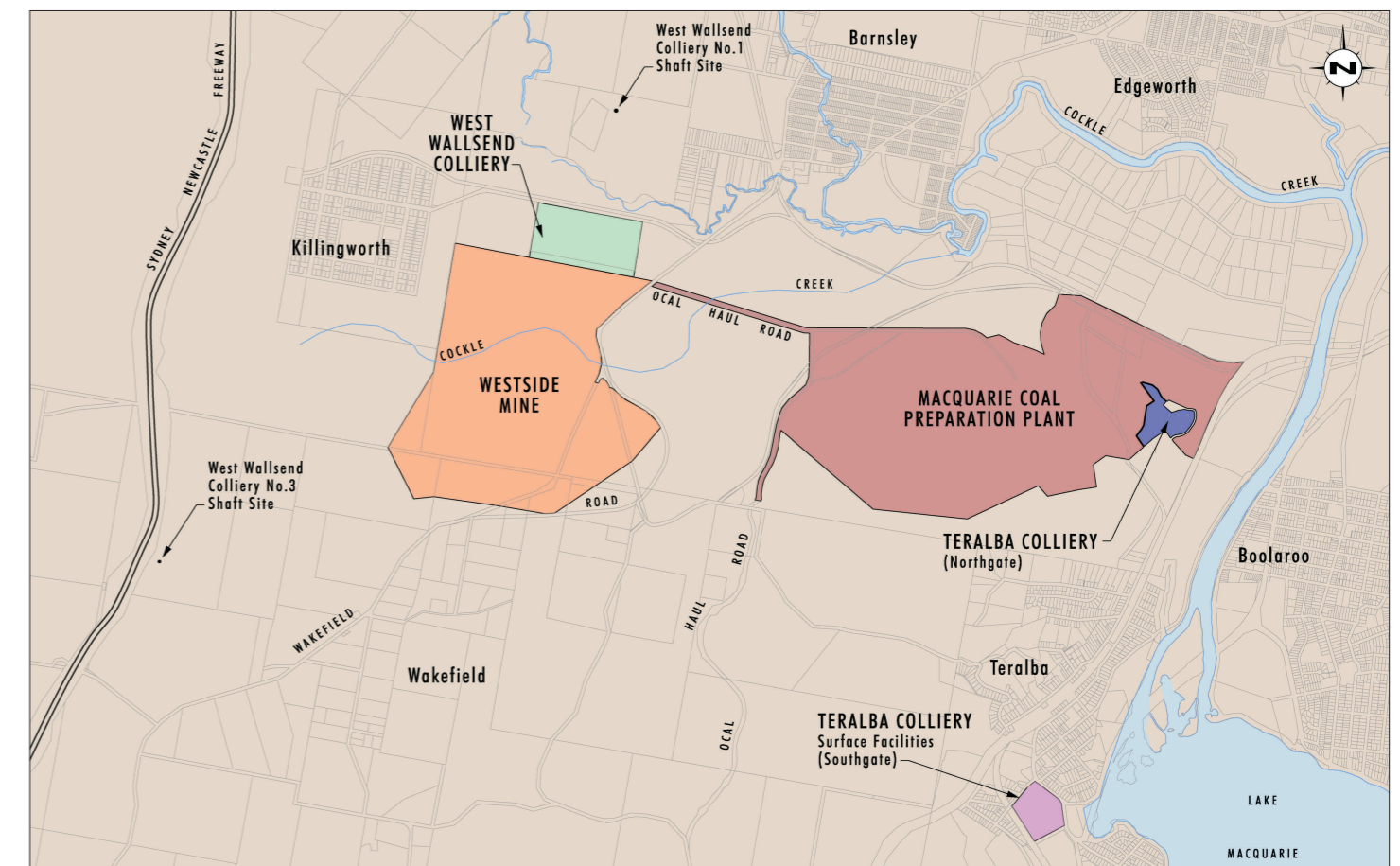
Welcome to the latest edition of the Oceanic Coal Australia Limited (OCAL) Community Newsletter, which provides you with an update of what's been happening at OCAL over the last year.

## Who are We: OCAL or Xstrata?

OCAL operates on behalf of Macquarie Coal Joint Venture: an underground coal mine (West Wallsend Colliery), an underground coal mine on care and maintenance activities (Teralba Colliery), an open-cut coal mine (Westside Mine) and a coal preparation plant (Macquarie Coal Preparation Plant).

OCAL is wholly owned by Xstrata Coal, which also owns and manages numerous other operations across NSW in the Hunter Valley, Lithgow and Mudgee regions.

OCAL operations, as shown below, are located near Barnsley, Wakefield, Killingworth and Teralba. OCAL places high importance on the management of both environmental and community issues.



Location of OCAL Properties

# Community News

## Barnsley School Visit

Friday 18th August 2006 marked an exciting school excursion visit for more than 80 Barnsley Primary School children. The children visited West Wallsend Colliery and Westside Mine where they were welcomed by Paul Amidy (Environment & Community Manager) and Neil Rae (Westside Mine Operations Manager), respectively.

The excursion was conducted in two halves. Half the students went on a bus tour of Westside Mine with informative and educational commentary by Neil Rae, while the other half were able to learn about some of the underground mining equipment and were presented with a sample of coal to take home as souvenirs of their exciting day! The two groups then swapped activities to experience parts of both the open cut mine and underground operations.

Ocal welcomes the opportunity to educate students on mining issues and if your school would also like to visit the Operations or to have a presentation conducted at your school, please contact Paul Amidy on (02) 4941 2163.



## Westside Community Consultative Committee

The Westside Mine Community Consultative Committee (CCC) meets twice a year to discuss both operational and environmental performance of the Westside Mine.

If you have any issues you would like discussed in these meetings, please contact Neil Rae, Westside Mine Operations Manager for a committee member contact list and one of the committee members may speak on your behalf. The most recent meeting was held in November 2006.



Westside CCC members

## Wakefield School Bus

Both Westside Mine and West Wallsend Colliery have donated money to Variety The Children's Charity to assist in the purchase of a 12 seater bus for transporting the children of Wakefield School.

Westside Mine and West Wallsend Colliery will donate further money for the next 3 years to support Wakefield School in the ongoing operation of the bus.



Neil Rae at presentation of the Wakefield School Bus

# Teralba Colliery News

## Greenhouse Gas Abatement Project

Teralba Colliery is an underground coal mine located at Pitt St, Teralba. Development consent for Teralba Colliery was granted in 1973, with mining operations commencing in 1978. The mine utilised the longwall extraction method until mining ceased on 25th May 2001. Since 2001 the mine has been operating under a Care and Maintenance program while potential options for future mining are evaluated. Teralba Colliery currently employs four contractors to undertake care and maintenance activities.

In December 2002, Envirogen Pty Ltd lodged a development application with Lake Macquarie City Council for the construction of a methane-based power generation plant. The power plant generates power by burning methane emissions from Teralba Colliery and then feeds the power into the local electricity grid. The project assists in reducing Greenhouse Gas emissions.



Methane based power generation at Teralba Colliery

# West Wallsend Colliery News

## Diega Creek

West Wallsend Colliery has been working with local Wakefield residents to address concerns related to the impacts of subsidence on Diega Creek. In 2003 West Wallsend Colliery funded the development of a Rivercare Rehabilitation plan for the creek in order to address the residents concerns.

Further assessments have been undertaken during 2006 to assess impact on the creek. From this assessment and liaison with government agencies, two central issues have been identified, firstly groundwater and secondly erosion of the creek. A monitoring program will continue in relation to the groundwater issue. It is suggested that this issue may be related to the deficit of average annual rainfall for the past 5-6 years.

Whilst erosion existed in the creek prior to mining, subsidence may have increased the rate of bed/bank erosion. To address this issue West Wallsend Colliery are working closely with the local residents and government agencies to develop a remediation strategy.

## New Subsidence Management Plan

West Wallsend Colliery has developed a new Subsidence Management Plan (SMP) which outlines the strategies and commitment to manage subsidence impacts in consultation with identified stakeholders to produce acceptable outcomes consistent with community expectations.

A comprehensive application for SMP approval in the Northern mining area (as shown on Figure 1) was submitted for approval in December 2004. SMP approval by the Department of Primary Industries for the proposed Northern mining area was granted in August 2005.

An application to extend the SMP to encompass proposed mining in the Western and Southern mining areas (as shown in Figure 1) is currently being developed. Ongoing review and improvement of the current subsidence management strategies is continuing in consultation with the relevant stakeholders.

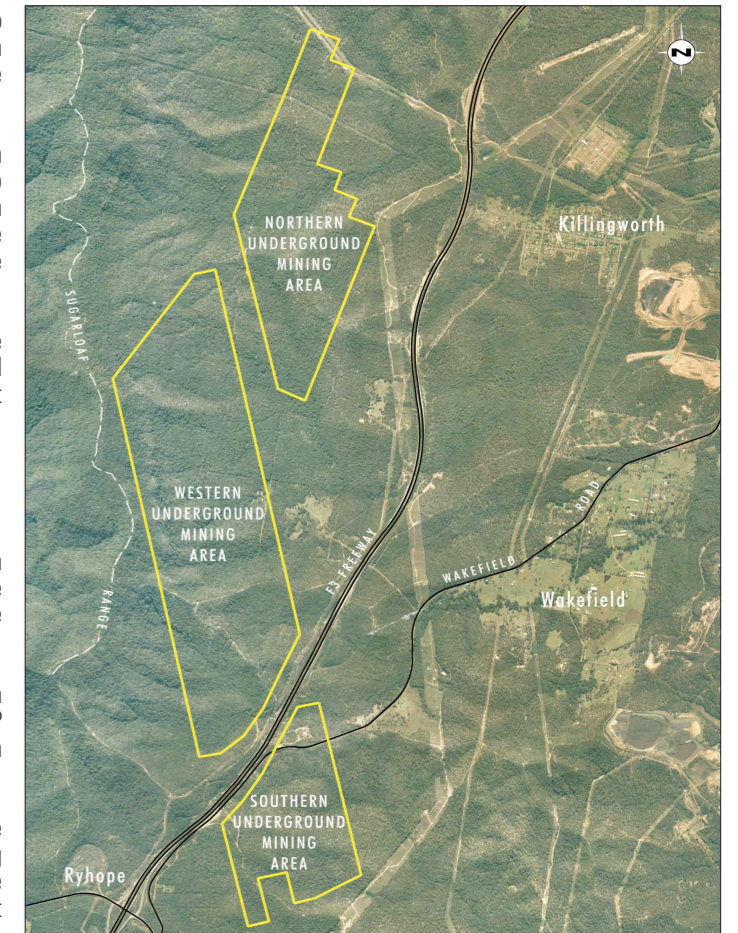


Figure 1: Subsidence Management Plan - Proposed Mining Areas

# Macquarie Coal Preparation Plant News

## Noise Management

The issue of noise generation has been raised by several members of the local community as an issue of concern. A targeted monitoring plan has been undertaken to assess noise and this program has demonstrated compliance with the relevant consent limits.

Despite achieving compliance MCPP are currently working with specialist consultants to address noise generation, particularly from the bulldozer stockpiling operations.

The outcomes of these trials will be communicated to the local residents.

## Water Management

Under their Environment Protection Licence, MCPP are permitted to discharge water offsite into Cockle Creek, within particular quality parameters. Despite complying with the regulations and in an attempt to achieve continuous improvement, MCPP has engaged a specialist consultant to undertake a review of the water management system at the site.

Outcomes of the review will be used in an effort to further improve discharge quality from the site.



Overview of Macquarie Coal Preparation Plant Tailings Dam